

Journal Pre-proof

Early induction of functional SARS-CoV-2 specific T cells associates with rapid viral clearance and mild disease in COVID-19 patients

Anthony T. Tan, Martin Linster, Chee Wah Tan, Nina Le Bert, Wan Ni Chia, Kamini Kunasegaran, Yan Zhuang, Christine Y.L. Tham, Adeline Chia, Gavin JD. Smith, Barnaby Young, Shirin Kalimuddin, Jenny G.H. Low, David Lye, Lin-Fa Wang, Antonio Bertoletti

PII: S2211-1247(21)00041-3

DOI: <https://doi.org/10.1016/j.celrep.2021.108728>

Reference: CELREP 108728

To appear in: *Cell Reports*

Received Date: 15 October 2020

Revised Date: 24 November 2020

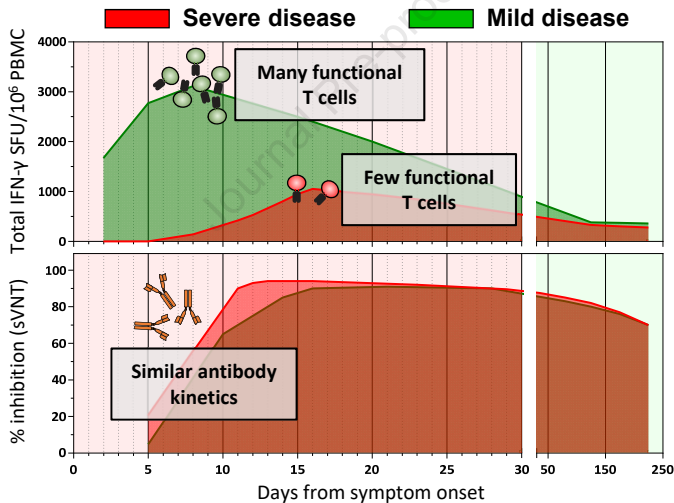
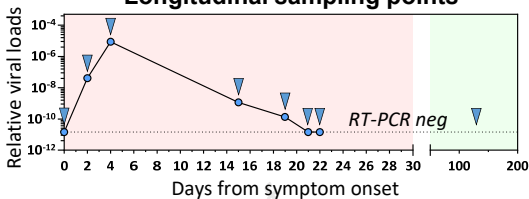
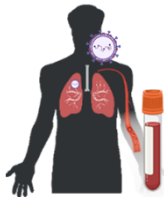
Accepted Date: 15 January 2021



Please cite this article as: Tan, A.T., Linster, M., Tan, C.W., Le Bert, N., Chia, W.N., Kunasegaran, K., Zhuang, Y., Tham, C.Y.L., Chia, A., Smith, G.J., Young, B., Kalimuddin, S., Low, J.G.H., Lye, D., Wang, L.-F., Bertoletti, A., Early induction of functional SARS-CoV-2 specific T cells associates with rapid viral clearance and mild disease in COVID-19 patients, *Cell Reports* (2021), doi: <https://doi.org/10.1016/j.celrep.2021.108728>.

This is a PDF file of an article that has undergone enhancements after acceptance, such as the addition of a cover page and metadata, and formatting for readability, but it is not yet the definitive version of record. This version will undergo additional copyediting, typesetting and review before it is published in its final form, but we are providing this version to give early visibility of the article. Please note that, during the production process, errors may be discovered which could affect the content, and all legal disclaimers that apply to the journal pertain.

© 2021 The Author(s).



Early induction of functional SARS-CoV-2 specific T cells associates with rapid viral clearance and mild disease in COVID-19 patients

*Anthony T. Tan¹, *Martin Linster¹, Chee Wah Tan¹, Nina Le Bert¹, Wan Ni Chia¹, Kamini Kunasegaran¹, Yan Zhuang¹, Christine Y. L. Tham¹, Adeline Chia¹, Gavin JD. Smith¹, Barnaby Young^{2,3,4}, Shirin Kalimuddin^{1,5}, Jenny G. H. Low^{1,5}, David Lye^{2,3,4,6}, Lin-Fa Wang¹, #Antonio Bertoletti^{1,7}.

¹Programme in Emerging Infectious Diseases, Duke-National University of Singapore Medical School, Singapore

²National Centre for Infectious Diseases, Singapore

³Department of Infectious Diseases, Tan Tock Seng Hospital, Singapore

⁴Lee Kong Eian School of Medicine, Singapore

⁵Department of Infectious Diseases, Singapore General Hospital, Singapore

⁶Yong Loo Lin School of Medicine, National University Singapore, Singapore

⁷Singapore Immunology Network, A*STAR, Singapore

*Contributed equally

#Corresponding author and Lead Contact

Corresponding Author and Lead Contact Information:

Antonio Bertoletti, MD

Programme in Emerging Infectious Diseases Programme

Duke-NUS Medical School

8 College Road

Singapore 169857

Singapore

Tel: +65 6601 2646

Email: antonio@duke-nus.edu.sg

Summary

Virus-specific humoral and cellular immunity act synergistically to protect the host from viral infection. We interrogate the dynamic changes of virological and immunological parameters in 12 patients with symptomatic acute SARS-CoV-2 infection from disease onset to convalescence or death. We quantify SARS-CoV-2 viral RNA in the respiratory tract in parallel with antibodies and circulating T cells specific for various structural (NP, M, ORF3a and spike) and non-structural proteins (ORF7/8, NSP7 and NSP13). While rapid induction and quantity of humoral responses associates with an increase in disease severity, early induction of IFN- γ secreting SARS-CoV-2 specific T cells is present in patients with mild disease and accelerated viral clearance. These findings provide support for the prognostic value of early functional SARS-CoV-2 specific T cells with important implications in vaccine design and immune monitoring.

Introduction

In December 2019, a new coronavirus was detected in Wuhan, China in several patients with pneumonia and was later named SARS-CoV-2 (Zhou et al., 2020a). The illness (COVID-19) resulting from SARS-CoV-2 infection is reported to be multi-faceted with inflammation of the respiratory tract causing the leading symptoms of fever and dry cough (Chen et al., 2020). Both virus-specific humoral (Long et al., 2020a) (Gudbjartsson et al., 2020; Sun et al., 2020) and cellular (Grifoni et al., 2020) (Braun et al., 2020; Le Bert et al., 2020) (Weiskopf et al., 2020) components of adaptive immunity are induced in SARS-CoV-2 infected individuals but their roles in viral control or disease pathogenesis still needs to be clarified. Viral clearance and reduced disease severity have been associated with a coordinated activation of humoral and cellular anti-viral immunity (Rydzynski Moderbacher et al., 2020) and robust virus-specific T cell responses (Takahashi et al., 2020). On the other hand, a positive relation between the magnitude of SARS-CoV-2 antibodies (Hung et al., 2020; Long et al., 2020b) (Wang et al., 2020) or T cells (Peng et al., 2020) with disease severity have also been reported. However, most of these studies have analysed patients during the convalescent phase of infection and only few studies have reported the dynamic changes of viral and virus-specific immunological parameters in severe COVID-19 patients during the initial phases of infection (Weiskopf et al., 2020) (Rydzynski Moderbacher et al., 2020; Zhou et al., 2020b). To fill this gap, we longitudinally followed-up twelve patients (Supplementary Table 1) with SARS-CoV-2 infection from symptom onset to convalescence or death. We quantified SARS-CoV-2 viral load in the upper respiratory tract and SARS-CoV-2 specific antibodies and T cells at multiple time points from acute disease till convalescence or death. Our data reveal a direct association between early induction of functional SARS-CoV-2 specific T cells and rapid control of viral infection.

1
2
3
4
5
6
7
8
9
10
11
12
13
14
15
16
17
18
19
20
21
22

Results

Dynamics of SARS-CoV-2 replication

Relative quantities of SARS-CoV-2 in the respiratory tract and its persistence in each individual patient was calculated by utilizing the number of RT-PCR cycles as a proxy of viral quantity (Figure 1). Duration of infection was defined from symptom onset till RT-PCR negativity (two negative SARS-CoV-2 RT-PCR 24 hours apart). The patients displayed different profiles of virus quantity and persistence: short duration of infection was detected in four patients (P18, 04, 02 and 15) who became RT-PCR negative within 15 days of symptom onset. Five (P11, 16, 06, 09 and 03) were RT-PCR negative at around day 17-24, while two (P10 and 12) became RT-PCR negative almost 1 month after onset of symptoms. One patient (P05) who succumbed to infection was persistently SARS-CoV-2 RT-PCR positive till day 31 post symptom onset when he demised. Peak viral quantities was also positively correlated with the duration of infection (Figure 1 insert). In addition, while patients who eliminated the virus within 15 days experienced mild respiratory symptoms (presence of fever or respiratory symptoms but not requiring supplemental oxygen), patients with moderate (requiring oxygen supplementation $FiO_2 < 0.5$) and severe (requiring oxygen supplementation $FiO_2 > 0.5$, high flow oxygen and/or mechanical ventilation) symptoms eliminated the virus from upper respiratory tract later. Viral load detected in patients with mild symptoms were also lower than those with moderate/severe symptoms (Supplementary Figure 1A).

Dynamics of SARS-CoV-2 specific antibody response

We then characterized the kinetics of anti-SARS-CoV-2 antibody appearance. Virus neutralization ability was tested longitudinally utilizing the surrogate virus neutralization test (sVNT) that quantified the ability of serum antibodies to inhibit the binding of Spike RBD to ACE2 receptor *in vitro* (Tan et al., 2020). We also quantified anti-RBD, anti-S1 (S1 domain of spike) and anti-NP (nucleoprotein) IgG (Figure 2) and IgM (Supplementary Figure 2) antibodies with a Luminex-based quantification test that utilize beads coated with RBD, S1 domain of Spike and NP proteins respectively (Figure 2A).

Figure 2B shows that all COVID-19 patients developed neutralising antibodies with the exception of patient P02 who nonetheless cleared SARS-CoV-2 at day 13 post symptom onset (Figure 1). The peak neutralizing activity was achieved within 9-15 days post symptom onset. Patients with moderate/severe symptoms exhibited a stronger virus-specific antibody responses than those with mild disease (Supplementary Figure 1B and 1C). Of note, the two patients who first reached 90% virus neutralisation developed severe disease (P05-deceased and P03-severe). The kinetics of anti-RBD, anti-S1 and anti-NP IgG also peaked around the 10-20 days period, similar to previous observations (Isho et al., 2020; Ripperger et al., 2020) with higher peak levels of antibodies against NP and Spike detected in patient P05 who succumbed to the infection. Interestingly, when we analysed in parallel the kinetics of appearance of antibody responses against different proteins, we observed that patients with severe disease have an early NP-biased antibody response, while those with mild/moderate symptoms had either a spike-dominant or balanced response (Figure 2C). These kinetics of appearance is consistent with recent data (Atyeo et al., 2020; Sun et al.,

2020) showing that an anti-nucleocapsid humoral response is preferentially induced over a Spike IgG response in severe COVID-19 patients.

Dynamics of SARS-CoV-2 specific cellular responses

We next analysed the kinetics of functional SARS-CoV-2 specific T cell appearance during the RT-PCR positive phase of disease. Overlapping 15-mer peptide libraries (Supplementary Table 2) covering the whole NP, Membrane (M), ORF7ab, ORF8, ORF3a, the NSP7 and NSP13 of ORF1ab and a pool of ~40 peptides containing all the confirmed T cell epitopes of Spike were used to stimulate PBMC in an IFN- γ ELISPOT assay (Figure 3A).

During the initial phase of SARS-CoV-2 infection, the quantity of IFN- γ secreting cells after stimulation by the different peptides pools increased progressively with the peak of frequency detected within ~15 days after symptom onset in the majority of the tested patients (8 out of 12, Figure 3B and 3C) in line with previous reports (Weiskopf et al., 2020) (Rydzynski Moderbacher et al., 2020). In two patients, peak responses were detected beyond 20 days after symptom onset, while patient P05, who succumbed to disease before viral clearance, had no detectable IFN- γ secreting cells when stimulated with the different peptide pools until day 26 when stimulation with Spike peptides activated a weak response (Figure 3B). Importantly, production of IFN- γ was detected at all time points in all patients after stimulation with PMA+Ionomycin, showing that global cellular functionality was not fully compromised (Figure 4A insert). The frequency of IFN- γ secreting cells reactive to all the different peptide pools was also quantified at least 1 month after resolution of infection. The magnitude of the IFN- γ response declined markedly in 7 out of the 8 patients tested (Figure 3B), consistent with the waning of the cellular immune response that follows

1 resolution of acute infection. The quantity and time of appearance of SARS-CoV-2 peptide-
2 reactive cells was then analysed in relation to the virological and clinical parameters.

3 First, we observed that in contrast to the antibody quantity, the overall magnitude of SARS-
4 CoV-2 peptide-reactive cells was not proportional to the severity of disease. Figure 2B shows
5 that while higher quantities of IgG were observed in patients with moderate/severe
6 compared to mild COVID-19, an opposite pattern was detected when the total IFN- γ
7 response detected after stimulation by all the peptide pools was calculated. Higher
8 frequencies of IFN- γ secreting cells both in the early (day 1-15) as well as late stages (day 15-
9 30) were present in mild but not in the moderate/severe COVID-19 patients (Figure 3B and
10 3C; Supplementary Figure 1D). In addition, by analysing the association between the time of
11 SARS-CoV-2 T cell appearance and the length of infection, we observed a statistically
12 significant direct correlation between the early appearance of SARS-CoV-2 peptide-reactive
13 cells (specific for NP, ORF7/8, ORF3a, M and Spike) and shorter duration of infection (Figure
14 3D). In contrast, no correlation was observed when we analysed the time of antibody and
15 the length of infection. The temporal association of functional SARS-CoV-2 specific T cell
16 appearance with reduced length of infection suggests that T cells play an essential role in
17 the control of SARS-CoV-2 infection.

18 19 Hierarchy of T cell immunogenicity towards different SARS-CoV-2 proteins

20 Finally, we performed a granular analysis of the ability of different SARS-CoV-2 proteins to
21 stimulate IFN- γ production in severe and mild cases of SARS-CoV-2 infection. Peptide pools
22 covering all the different structural proteins (M, NP, ORF3a and Spike) and the ORF7/8
23 accessory proteins stimulate IFN- γ production from the PBMCs of all the acute patients with

1 the exception of patient P05 (Figure 4A). In line with our previous report, NSP7 and NSP13
2 pools were rarely able to trigger IFN- γ responses in COVID-19 patients(Le Bert et al., 2020).
3 In most of the acute patients, we observed the simultaneous presence of IFN- γ producing
4 cells specific for all the different peptide pools both during the acute phase of infection and
5 at convalescence (Figure 4A). Of note, we observed that the ORF 7/8 peptide pool triggered
6 a robust IFN- γ response preferentially in the early phases of infection and only in patients
7 with mild disease (Figure 3B and 4A). When we calculated the proportion of IFN- γ producing
8 cells triggered by different SARS-CoV-2 proteins at the time of first detection and at
9 convalescence (>30 days after viral clearance), we observed that ORF7/8 responses waned
10 almost completely at convalescence. In contrast, the proportion of cells stimulated by the
11 peptide pools covering other SARS-CoV-2 proteins remained unchanged (M, ORF3a and
12 Spike) or increased (NP) over time (Figure 4B). To demonstrate unequivocally that IFN- γ
13 secreting cells detected in our assays after peptide stimulation were indeed T cells, we
14 performed a flow cytometry phenotypic analysis of IFN- γ producing cells expanded after
15 SARS-CoV-2 peptide stimulation of PBMCs. Unfortunately, such characterisations was
16 performed only with PBMCs of SARS-CoV-2 patients at convalescence due to biosafety
17 regulations that prevented us from analysing PBMCs collected during active infection (RT-
18 PCR positive) outside a BSL-3 laboratory. As expected and already demonstrated, CD3+ T
19 cells produced IFN- γ after peptide pool stimulation (Figure 4C and 4D). Most of the peptide
20 responsive T cells were CD4 cells but CD8 T cells specific to NP peptide pools were also
21 detected (Figure 4D). We were also able to expand ORF7 or ORF8 specific T cells in 6 out of 7
22 patients in whom we detected, in the early phases of infection, a robust population of IFN- γ
23 producing cells after activation with the combined ORF7/8 peptide pools. Phenotypic
24 analysis showed that these cells were all CD4 T cells. Thus even though we were unable to

1 directly demonstrate that CD4 T cells were responsible for the IFN- γ response triggered by
2 ORF7/8 pools during the early phases of infection, such interpretation was strongly
3 supported by the exclusive expansion of ORF7 and ORF8 specific CD4 T cells in the
4 convalescents.

Discussion

Despite the small number of patients analysed, our longitudinal analysis of the dynamics of virological and virus-specific immunological parameters during the acute phase of SARS-CoV-2 infection revealed a positive relation between the early detection of IFN- γ secreting SARS-CoV-2 specific T cells and early control of infection. In addition, the quantity of functional virus-specific T cells present during the acute phase of infection was not directly proportional to the COVID-19 severity but was actually more robust in patients with mild disease. These data contrasted with the recent analysis of SARS-CoV-2 specific T cells in COVID-19 convalescent patients that reported a positive association of the frequency of SARS-CoV-2 specific T cells with disease severity (Peng et al., 2020). However in this work, the T cell response was measured in patients who were already in the convalescent phase. Since our longitudinal analysis showed that the frequency of SARS-CoV-2 specific T cells rapidly waned after SARS-CoV-2 clearance, the time of T cell analysis can significantly influence the magnitude of T cell response detected. The most robust functional T cell response was detected in patients with mild symptoms who cleared the virus early, while for example in the patient with severe disease who succumbed to infection we could only detect a weak and monospecific IFN- γ secreting cell response at 26 days after symptom onset. These observations are in line with other studies where paucity of IFN- γ producing SARS-CoV-2 specific T cells was observed in few patients with severe disease analyzed during the early phase of disease (Weiskopf et al., 2020) (Rydzynski Moderbacher et al., 2020) (Zhou et al., 2020b). This absence of IFN- γ producing SARS-CoV-2 specific T cells in the peripheral blood of patients with severe disease could be caused by a defective induction of SARS-CoV-2 T cells. Alternatively, a more robust sequestration of the cells in the highly inflamed lung environment (Zhao et al., 2016) or a functional impairment of SARS-CoV-2 T

cells could also occur (Zhou et al., 2020b). The latter possibility is also supported by recent data obtained with different methods (HLA-multimers or single cell multi-omic analysis) showing an impairment of IFN- γ production by SARS-CoV-2 specific T cells in COVID-19 recovered patients (Rha et al., 2020) and the presence of a population of proliferating exhausted T cells during the early phases of severe COVID-19 (Su et al., 2020a).

Additional studies would have to be performed in order to confirm and/or differentiate these potential causes of the defect of SARS-CoV-2 T cells detected in more severe cases of COVID-19. Ultimately, combining these data with our observations further stresses the importance of an early and functional SARS-CoV-2 specific T cell response in reducing infection and disease severity.

The opposite scenario was observed for antibodies. The two most severe COVID-19 patients studied here showed the most rapid and robust ability to achieve peak virus neutralisation and the overall quantities of SARS-CoV-2 specific antibodies were higher in severe than milder COVID-19 cases. These data confirm the numerous observations that have linked virus-specific antibody production (Hung et al., 2020; Long et al., 2020b) (Ripperger et al., 2020) (Wang:2020ji} and B cell hyperactivation (Woodruff et al., 2020) with increased disease severity. Due to the significant link between early induction of T cells and shorter duration of the infection, the demonstration of the early induction of ORF7/8 specific cellular immunity can be of particular significance in viral control. For example, a 382 nucleotide deletion that truncates ORF7b and ORF8 leading to the elimination of ORF8 transcription had been reported at low frequencies in multiple countries (Su et al., 2020b). While the mechanism leading to the acquisition of the genomic change is unresolved, the early induction of ORF7/8 specific T cells and a recent report of the robust early antibody

response to ORF8 in SARS-CoV-2 infection would suggest that an immune-driven selection process could be involved (Hachim et al., 2020). Given that this viral variant was associated with a milder disease (Young et al., 2020), the early induction of ORF7/8 immunity is worthy of further investigation. It remains difficult to explain why ORF7/8 specific T cells were preferentially detected during the acute phase of infection. Recent findings show a corresponding increase in ORF8-specific antibodies during the early phases of SARS-CoV-2 infection (Hachim et al., 2020). However, there is no experimental evidences of a preferential early expression of ORF7/8 proteins in SARS-CoV-2 infected cells that might contribute to an increased immunogenicity of these accessory proteins in the early phases of SARS-CoV-2 infection. An alternative hypothesis is that pre-existing immunological memory to ORF7 or ORF8 might have caused a selective accelerated expansion of ORF7/8 T cells since ORF7/8 specific T cells can be occasionally detected in archived PBMC samples collected from healthy individuals before 2019 (Mateus et al., 2020). However, ORF7/8 is only expressed by SARS-CoV-1 and SARS-CoV-2 with little homology to other seasonal coronaviruses, hence the role of such peptide cross-reactive cells is puzzling and calls for a more detailed analysis of the effect of pre-existing immunity in the control or pathogenesis of SARS-CoV-2 infection and of the role of T cells specific for different antigens in SARS-CoV-2 protection.

Limitations of study

There are two main limitations of this study: sample size and the use of a single functional assay (ELISPOT for IFN- γ production) for the detection of SARS-CoV-2 T cells during the PCR+ phase of infection.

The association of early SARS-CoV-2 specific T cell detection with accelerated SARS-CoV-2 clearance and milder symptoms is significant in our longitudinal analysis of 12 patients. Nevertheless larger studies are needed to evaluate the potential influence of age, sex and ethnicities in the obtained results and thus prove that measurement of IFN- γ producing SARS-CoV-2 specific T cells in the heterogeneous populations of infected individuals might have prognostic value. Testing SARS-CoV-2 T cells with a method that only measure IFN- γ producing cells prevent the possible detection of SARS-CoV-2 T cells producing different cytokines (i.e IL-21, TNF- α , IL-17) or functionally exhausted T cells, information that would be important to better understand the mechanisms of COVID-19 severity and SARS-CoV-2 viral clearance. Similarly the inability to perform a phenotypic analysis of IFN- γ producing T cells do not clarify whether the preponderance of SARS-CoV-2 CD4 T cell response that we detected at the convalescent phase with flow cytometry is absolute or occurring only after the acute phase of disease. SARS-CoV-2 CD8 T cells are known to be induced in COVID-19 patients (Grifoni et al., 2020; Schulien et al., 2020). It will be important to understand whether the initial IFN- γ producing cells detected in the early phase of infections are preferentially constituted by CD4 or CD8 T cells.

Despite these limitations, the direct association between early induction of IFN- γ producing SARS-CoV-2 specific T cells with faster viral clearance and milder disease observed here support the growing evidences of the protective role of T cells in SARS-CoV-2 infection and provide initial support for the prognostic value of SARS-CoV-2 specific T cell analysis in the management of COVID-19 patients.

Acknowledgments

We want to express our gratitude to the study participants and personnel involved in ensuring the safety of the BSL3 laboratory operations. We also thank all clinical and nursing staff who provided care for the patients ; staff in Singapore Infectious Disease Clinical Research Network and Infectious Disease Research and Training Office, National Centre for Infectious Diseases for coordinating patient recruitment.

Funding source

This study is supported by the Singapore Ministry of Health's National Medical Research Council under its COVID-19 Research Fund (COVID19RF3-0060).

Author contributions

A.T.T., N.L.B. and A.B. designed the experiments. M.L., C.W.T, Y.Z. and G.J.S. performed the experiments in the BSL3 laboratory. W.N.C., C.W.T and L.W. performed the antibody analysis. K.K., C.T. and A.C. performed all other experiments. A.T.T., M.L., N.L.B. and A.B. analysed and interpreted the data. A.T.T. and A.B. prepared the figures and wrote the paper. B.Y., S.K., J.L. and D.L. recruited patients and provided all clinical data. A.B. designed, coordinated the study and provided funding.

Declaration of interest

1 A.B. is a cofounder and A.T.T. consults for Lion TCR, a biotech company developing T cell
2 receptors for treatment of virus-related diseases and cancers. None of the other authors has
3 any competing interest related to the study.

4

Journal Pre-proof

Figure Legends

Figure 1. Relative quantities of SARS-CoV-2 in the upper respiratory tract of symptomatic COVID-19 patients during acute infection. Longitudinal RT-PCR quantification of SARS-CoV-2 RNA in the upper respiratory tract of COVID-19 patients (n=12) with variable disease severity from symptom onset until RT-PCR negativity. Dotted lines denote the positive cut-off. Inserts show the correlation between the peak relative quantities of SARS-CoV-2 and the duration of infection. The P-value and the non-parametric Spearman correlation coefficient are indicated.

Figure 2. Longitudinal analysis of SARS-CoV-2 specific antibody-related responses in acute COVID-19 patients. A) Schematic representation of the surrogate virus neutralisation assay and the Luminex-based assay to quantify SARS-CoV-2 RBD-, S1- and NP-specific IgG and IgM antibodies. A cut-off to define significant virus neutralisation or antibody quantities was set at 20% inhibition for the sVNT assay (as defined in ref) and an MFI >100 for the Luminex based assay respectively. B) SARS-CoV-2 neutralisation and the relative quantities of specific IgG and antibodies (n=12). C) Rose plots represent the quantity of RBD-, S1- and NP-specific IgG and IgM antibodies at the time of first detectable antibody response (n=12). Patient P02 has no detectable antibody response at 3, 4, 7 and 9 days after symptom onset where samples were available.

Figure 3. Longitudinal analysis of SARS-CoV-2 T responses in COVID-19 patients during acute infection and at convalescence. A) SARS-CoV-2 proteome organization; analysed proteins are marked by an asterisk. 15-mer peptides, which overlapped by 10 amino acids,

comprising the nucleoprotein, membrane, ORF7ab, ORF8, ORF3a, NSP7 and NSP13 were grouped into 10 pools with the indicated number of peptides in each pool. 15-mer predicted peptides previously shown to activate Spike-specific CD8 and CD4 T cells were grouped into a single pool. PMA/ionomycin was used as a positive control for all samples analysed. B) Longitudinal analysis of the total SARS-CoV-2 T cell response in COVID-19 patients (n=12) from onset of disease until convalescence. Individual lines represent single patients. C) Total SARS-CoV-2 T cell response detected in all COVID-19 patients (n=12) at days 1-15, 16-30 and >50 days after symptom onset. Patients with mild (n=8) or moderate/severe (n=4) symptoms are indicated. D) Linear regression analysis of the duration of infection and the number of days to the first detectable T cell response (Total, NP-specific, ORF7/8-specific, ORF3a-specific, M-specific or Spike-specific T cell response) or antibody-related response (sVNT, RBD-, S1- or NP-specific IgG and IgM) are shown in the respective dot plots. P-values and the corresponding r^2 values are shown.

Figure 4. Hierarchy of cellular responses towards different SARS-CoV-2 proteins. A) Stacked bars denotes the frequency of peptide reactive cells in all COVID-19 patients (n=12) against the indicated SARS-CoV-2 protein at all time points tested. Green shaded areas denote the convalescence phase of the disease. Positive controls are inserted for each patient. B) Plots show the proportion of peptide reactive cells attributed to the respective SARS-CoV-2 protein at the peak response during the acute phase and the convalescence phase of the disease (n=8). Wilcoxon matched-pairs test was used to evaluate the differences and the p-values are shown. Short-term T cell lines were also generated from the convalescent samples using the respective SARS-CoV-2 peptide pools. Each line was

1 then stimulated with the corresponding peptide pool used for expansion and the frequency
2 of IFN- γ producing T cells was quantified. C) The flow cytometry gating strategy is shown.
3 Representative dot plots of ORF7/8, M and NP-2 specific T cell lines generated from patient
4 P06 are displayed. D) Frequencies of IFN- γ producing CD4 or CD8 T cells of all in vitro
5 expanded T cell lines generated from the convalescent PBMCs of respective COVID-19
6 patients (n=7).

7

8

STAR Methods

RESOURCE AVAILABILITY

Lead Contact

Further information and requests for resources and reagents should be directed to and will be fulfilled by the Lead Contact, Antonio Bertoletti (antonio@duke-nus.edu.sg).

Materials Availability

This study did not generate new unique reagents.

Data and Code Availability

The published article includes all datasets generated or analyzed during this study. This study did not generate/analyze computer codes or algorithms.

EXPERIMENTAL MODEL AND SUBJECT DETAILS

Patients (n=12) were enrolled in this study after being admitted to the hospital in Singapore and confirmed to be infected with SARS-CoV-2 based on a positive SARS-CoV-2 RT-PCR test as part of the PROTECT (National Healthcare Group Domain Specific Review Board reference number 2012/00917) and Novel Pathogens (CIRB ref. 2018/3045) studies. All participants provided written informed consent. None of the patients received immunomodulatory treatments during the study period. Six patients were male, six were female, their median age at time of admission was 52.5 years, ranging from 27 to 78 years. Additional patient information are found in Supplementary Table 1.

1 METHOD DETAILS

2 *Peripheral blood mononuclear cell isolation*

3 Peripheral blood of acutely infected patients was collected in Mononuclear Cell Preparation
4 tubes (CPT, BD Vacutainer) and transferred at 4°C to the biosafety level-3 (BSL3) facility for
5 same-day processing. Blood from study participants at convalescent time points was
6 obtained and processed in BSL2 laboratories. Peripheral blood mononuclear cells from all
7 collected blood samples were isolated by Ficoll-Paque density gradient centrifugation.

9 *Surrogate virus neutralization assay*

10 sVNT assay to quantify the neutralising antibody response were performed as previously
11 described (Tan et al., 2020). Briefly, sera from acutely infected patients were prepared in
12 BSL3 containment and heat-inactivated prior to sVNT assay. HRP-conjugated RBD
13 (Genscript) were pre-incubated with 1:20 diluted serum at 37°C for 1h, followed by addition
14 to the Fc-chimeric human ACE2-coated MaxiSORP ELISA plate (Nunc) for an hour at room
15 temperature. Colorimetric signal was developed using TMB substrate (KPL) after extensive
16 PBST washes and the reaction was stopped with 1M HCl. Absorbance reading at 450 nm and
17 570 nm were obtained using Hidex Sense microplate reader (Hidex).

19 *Luminex analysis*

20 SARS-CoV-2 RBD, S1 and N proteins (Genscript) were conjugated onto MagPlex microsphere
21 (Luminex) using xMAP antibody coupling kit (Luminex). SARS-CoV-2 spike and N proteins
22 specific antibodies were detected by pre-incubation of 100-fold diluted serum (in 1% BSA

PBS) with conjugated microspheres (1250 beads/antigen) for 1h at room temperature, followed by 1:1000 diluted PE-conjugated anti-human IgG polyclonal antibody (eBioscience) or PE-conjugated anti-human IgM antibody (SouthernBiotech) for 1h at room temperature. The signal was detected using Luminex MAGPIX instrument.

IFN- γ ELISPOT assay

15-mer peptides that spanned the entire ORF of genes eight SARS-CoV-2 proteins (NP, M, ORF7, ORF8, ORF3, S, NSP7, NSP13) and antibody responses to two SARS-CoV-2 proteins (NP, S) were synthesised (GL Biochem, Shanghai, China) with 10 amino acids overlap and were grouped into pools of approximately 40 peptides (Supplementary Table 2). CPT tubes were centrifuged at 1500 rcf for 15 mins and approximately 2 ml of mononuclear cells located on top of the polyester gel were aliquoted and stored at -80°C. ELISPOT plates were prepared with anti-human IFN- γ coating antibody (MabTech) and peptides pools in 50 μ l AIM-V medium (Gibco; Thermo Fisher Scientific) supplemented with 2% AB human serum (Gibco; Thermo Fisher Scientific) on the day of incubation with PBMCs. Vials containing PBMCs were thawed at RT, 2U Benzonase (SigmaAldrich) to remove remaining nucleic acids was added when fully thawed and incubated for 15 mins before centrifugation at 1000 rcf for 10 mins. The cell pellet was dissolved in 1 ml of AIM-V medium (Gibco; Thermo Fisher Scientific) supplemented with 2% AB human serum (Gibco; Thermo Fisher Scientific) before quantification at undiluted and 1:10 dilution using a Scepter 2.0 cell counter (Millipore). Approximately 2×10^5 PBMCs in 100 μ l per well were incubated in the presence of peptides overnight at 37°C and 5% CO₂. After 24 hours, inoculum was removed and plates were washed six times with PBS. Biotinylated anti-human IFN- γ antibody (MabTech) at a 1:2000

dilution in PBS/0.5% FCS was incubated at RT for two hours, followed by six wash steps with PBS and incubation of Streptavidin-ALP (MabTech) at a 1:2000 dilution in PBS/0.5% FCS at RT for one hour. After another six PBS washes, 50µl of KPL BCIP/NBT phosphatase substrate (SeraCare) was added and incubated at RT in the dark for 5-15 mins. The reaction was stopped by washing the plate with water extensively when the chromogenic reaction produced clearly visible spots. Subsequently, the plates were allowed to air-dry and spot forming units (SFU) were analysed using an Immunospot reader and software (Cellular Technology Limited).

SARS-CoV-2 specific T cell lines

T cell lines were generated as follows: 20% of PBMC were pulsed with 10 µg/ml of the overlapping SARS-CoV-2 peptides (all pools combined) or single peptides for 1 hour at 37°C, subsequently washed, and co-cultured with the remaining cells in AIM-V medium (Gibco; Thermo Fisher Scientific) supplemented with 2% AB human serum (Gibco; Thermo Fisher Scientific). T cell lines were cultured for 10 days in the presence of 20 U/ml of recombinant IL-2 (R&D Systems).

Flow cytometry analysis

Expanded T cell lines were stimulated for 5h at 37°C with or without SARS-CoV-2 peptide pools (2 µg/ml) in the presence of 10 µg/ml brefeldin A (Sigma-Aldrich). Cells were stained with the yellow LIVE/DEAD fixable dead cell stain kit (Invitrogen) and anti-human CD3 PerCp Cy5.5 (clone SK7; 3:50), anti-human CD4 PE-Cy7 (clone SK3; 3:50), and anti-human CD8 APC-

Cy7 (clone SK1; 3:50) antibodies. Cells were subsequently fixed and permeabilised using the Cytofix/Cytoperm kit (BD Biosciences-Pharmingen) and stained with anti-human IFN- γ PE (clone 25723, R&D Systems; 1:25) and analysed on a BD-LSR II FACS Scan. Data were analysed by Kaluza (Beckman Coulter). Antibodies were purchased from BD Biosciences-Pharmingen unless otherwise stated.

QUANTIFICATION AND STATISTICAL ANALYSIS

All statistical analysis were performed using GraphPad Prism v7. Where applicable, the statistical tests used and the definition of centre were indicated in the figure legends. Statistical significance was defined as having a P-value of less than 0.05. In all instances, “n” refers to the number of patients analysed.

References

- Atyeo, C., Fischinger, S., Zohar, T., Slein, M.D., Burke, J., Loos, C., McCulloch, D.J., Newman, K.L., Wolf, C., Yu, J., et al. (2020). Distinct Early Serological Signatures Track with SARS-CoV-2 Survival. *Immunity* 53, 524–532.e4.
- Braun, J., Loyal, L., Frentsch, M., Wendisch, D., Georg, P., Kurth, F., Hippenstiel, S., Dingeldey, M., Kruse, B., Fauchere, F., et al. (2020). SARS-CoV-2-reactive T cells in healthy donors and patients with COVID-19. *Nature* 587, 270–274.
- Chen, G., Wu, D., Guo, W., Cao, Y., Huang, D., Wang, H., Wang, T., Zhang, X., Chen, H., Yu, H., et al. (2020). Clinical and immunological features of severe and moderate coronavirus disease 2019. *J. Clin. Invest.* 130, 2620–2629.
- Grifoni, A., Weiskopf, D., Ramirez, S.I., Mateus, J., Dan, J.M., Moderbacher, C.R., Rawlings, S.A., Sutherland, A., Premkumar, L., Jadi, R.S., et al. (2020). Targets of T Cell Responses to SARS-CoV-2 Coronavirus in Humans with COVID-19 Disease and Unexposed Individuals. *Cell* 181, 1489–1501.e15.
- Gudbjartsson, D.F., Norddahl, G.L., Melsted, P., Gunnarsdottir, K., Holm, H., Eythorsson, E., Arnthorsson, A.O., Helgason, D., Bjarnadottir, K., Ingvarsson, R.F., et al. (2020). Humoral Immune Response to SARS-CoV-2 in Iceland. *N Engl J Med.* 383, 1724-1734.
- Hachim, A., Kavian, N., Cohen, C.A., Chin, A.W.H., Chu, D.K.W., Mok, C.K.P., Tsang, O.T.Y., Yeung, Y.C., Perera, R.A.P.M., Poon, L.L.M., et al. (2020). ORF8 and ORF3b antibodies are accurate serological markers of early and late SARS-CoV-2 infection. *Nat Immunol.* 21, 1293–1301.
- Hung, I.F.-N., Cheng, V.C.-C., Li, X., Tam, A.R., Hung, D.L.-L., Chiu, K.H.-Y., Yip, C.C.-Y., Cai, J.-P., Ho, D.T.-Y., Wong, S.-C., et al. (2020). SARS-CoV-2 shedding and seroconversion among passengers quarantined after disembarking a cruise ship: a case series. *The Lancet Infectious Diseases* 20, 1051–1060.
- Isho, B., Abe, K.T., Zuo, M., Jamal, A.J., Rathod, B., Wang, J.H., Li, Z., Chao, G., Rojas, O.L., Bang, Y.M., et al. (2020). Persistence of serum and saliva antibody responses to SARS-CoV-2 spike antigens in COVID-19 patients. *Science Immunology* 5, eabe5511.
- Le Bert, N., Tan, A.T., Kunasegaran, K., Tham, C.Y.L., Hafezi, M., Chia, A., Chng, M.H.Y., Lin, M., Tan, N., Linster, M., et al. (2020). SARS-CoV-2-specific T cell immunity in cases of COVID-19 and SARS, and uninfected controls. *Nature* 584, 457–462.
- Long, Q.-X., Liu, B.-Z., Deng, H.-J., Wu, G.-C., Deng, K., Chen, Y.-K., Liao, P., Qiu, J.-F., Lin, Y., Cai, X.-F., et al. (2020a). Antibody responses to SARS-CoV-2 in patients with COVID-19. *Nat Med.* 26, 845–848.
- Long, Q.-X., Tang, X.-J., Shi, Q.-L., Li, Q., Deng, H.-J., Yuan, J., Hu, J.-L., Xu, W., Zhang, Y., Lv, F.-J., et al. (2020b). Clinical and immunological assessment of asymptomatic SARS-CoV-2 infections. *Nat Med.* 26, 1200–1204.

- 1 Mateus, J., Grifoni, A., Tarke, A., Sidney, J., Ramirez, S.I., Dan, J.M., Burger, Z.C., Rawlings,
2 S.A., Smith, D.M., Phillips, E., et al. (2020). Selective and cross-reactive SARS-CoV-2 T cell
3 epitopes in unexposed humans. *Science* 370, 89-94.
- 4 Peng, Y., Mentzer, A.J., Liu, G., Yao, X., Yin, Z., Dong, D., Dejnirattisai, W., Rostron, T.,
5 Supasa, P., Liu, C., et al. (2020). Broad and strong memory CD4+ and CD8+ T cells induced by
6 SARS-CoV-2 in UK convalescent individuals following COVID-19. *Nat Immunol.* 21, 1336-
7 1345.
- 8 Rha, M.-S., Jeong, H.W., Ko, J.-H., Choi, S.J., Seo, I.-H., Lee, J.S., Sa, M., Kim, A.R., Joo, E.-J.,
9 Ahn, J.Y., et al. (2020). IFN- γ is Produced by Pd-1 + Cells Among SARS-CoV-2-Specific MHC-I
10 Multimer+CD8 + T Cells in Acute and Convalescent COVID-19 Patients. Available at SSRN:
11 <https://ssrn.com/abstract=3684758> or <http://dx.doi.org/10.2139/ssrn.3684758>.
- 12 Ripberger, T.J., Uhrlaub, J.L., Watanabe, M., Wong, R., Castaneda, Y., Pizzato, H.A.,
13 Thompson, M.R., Bradshaw, C., Weinkauf, C.C., Bime, C., et al. (2020). Orthogonal SARS-
14 CoV-2 Serological Assays Enable Surveillance of Low Prevalence Communities and Reveal
15 Durable Humoral Immunity. *Immunity* 53, 925-933.e4.
- 16 Rydyznski Moderbacher, C., Ramirez, S.I., Dan, J.M., Grifoni, A., Hastie, K.M., Weiskopf, D.,
17 Belanger, S., Abbott, R.K., Kim, C., Choi, J., et al. (2020). Antigen-Specific Adaptive Immunity
18 to SARS-CoV-2 in Acute COVID-19 and Associations with Age and Disease Severity. *Cell* 183,
19 996-1012.e19.
- 20 Schulien, I., Kemming, J., Oberhardt, V., Wild, K., Seidel, L.M., Killmer, S., Sagar, Daul, F.,
21 Salvat Lago, M., Decker, A., et al. (2020). Characterization of pre-existing and induced SARS-
22 CoV-2-specific CD8+ T cells. *Nat Med.* Available at: [https://doi.org/10.1038/s41591-020-](https://doi.org/10.1038/s41591-020-01143-2)
23 01143-2.
- 24 Su, Y., Chen, D., Lausted, C., Yuan, D., Choi, J., Dai, C., Voillet, V., Scherler, K., Troisch, P.,
25 Duvvuri, V.R., et al. (2020a). Multiomic Immunophenotyping of COVID-19 Patients Reveals
26 Early Infection Trajectories. *bioRxiv.* Available at:
27 <https://doi.org/10.1101/2020.07.27.224063>.
- 28 Su, Y.C.F., Anderson, D.E., Young, B.E., Linster, M., Zhu, F., Jayakumar, J., Zhuang, Y.,
29 Kalimuddin, S., Low, J.G.H., Tan, C.W., et al. (2020b). Discovery and Genomic
30 Characterization of a 382-Nucleotide Deletion in ORF7b and ORF8 during the Early Evolution
31 of SARS-CoV-2. *mBio* 11, e01610-20.
- 32 Sun, B., Feng, Y., Mo, X., Zheng, P., Wang, Q., Li, P., Peng, P., Liu, X., Chen, Z., Huang, H., et
33 al. (2020). Kinetics of SARS-CoV-2 specific IgM and IgG responses in COVID-19 patients.
34 *Emerg Microbes Infect.* 9, 940–948.
- 35 Takahashi, T., Ellingson, M.K., Wong, P., Israelow, B., Lucas, C., Klein, J., Silva, J., Mao, T., Oh,
36 J.E., Tokuyama, M., et al. (2020). Sex differences in immune responses that underlie COVID-
37 19 disease outcomes. *Nature.* Available at: <https://doi.org/10.1038/s41586-020-2700-3>.
- 38 Tan, C.W., Chia, W.N., Qin, X., Liu, P., Chen, M.I.-C., Tiu, C., Hu, Z., Chen, V.C.-W., Young, B.E.,
39 Sia, W.R., et al. (2020). A SARS-CoV-2 surrogate virus neutralization test based on antibody-

- mediated blockage of ACE2-spike protein-protein interaction. *Nat Biotechnol.* **38**, 1073–1078.
- Wang, Y., Zhang, L., Sang, L., Ye, F., Ruan, S., Zhong, B., Song, T., Alshukairi, A.N., Chen, R., Zhang, Z., et al. (2020). Kinetics of viral load and antibody response in relation to COVID-19 severity. *J. Clin. Invest.* **130**, 5235–5244.
- Weiskopf, D., Schmitz, K.S., Raadsen, M.P., Grifoni, A., Okba, N.M.A., Endeman, H., van den Akker, J.P.C., Molenkamp, R., Koopmans, M.P.G., van Gorp, E.C.M., et al. (2020). Phenotype and kinetics of SARS-CoV-2-specific T cells in COVID-19 patients with acute respiratory distress syndrome. *Science Immunology*. **5**, eabd2071.
- Woodruff, M.C., Ramonell, R.P., Nguyen, D.C., Cashman, K.S., Saini, A.S., Haddad, N.S., Ley, A.M., Kyu, S., Howell, J.C., Ozturk, T., et al. (2020). Extrafollicular B cell responses correlate with neutralizing antibodies and morbidity in COVID-19. *Nat Immunol.* **21**, 1506–1516.
- Young, B.E., Fong, S.-W., Chan, Y.-H., Mak, T.M., Ang, L.W., Anderson, D.E., Lee, C.Y.-P., Amrun, S.N., Lee, B., Goh, Y.S., et al. (2020). Effects of a major deletion in the SARS-CoV-2 genome on the severity of infection and the inflammatory response: an observational cohort study. *Lancet* **396**, 603–611.
- Zhao, J., Zhao, J., Mangalam, A.K., Channappanavar, R., Fett, C., Meyerholz, D.K., Agnihothram, S., Baric, R.S., David, C.S., and Perlman, S. (2016). Airway Memory CD4 + T Cells Mediate Protective Immunity against Emerging Respiratory Coronaviruses. *Immunity* **44**, 1379–1391.
- Zhou, P., Yang, X.-L., Wang, X.-G., Hu, B., Zhang, L., Zhang, W., Si, H.-R., Zhu, Y., Li, B., Huang, C.-L., et al. (2020a). A pneumonia outbreak associated with a new coronavirus of probable bat origin. *Nature* **579**, 270–273.
- Zhou, R., To, K.K.-W., Wong, Y.C., Liu, L., Zhou, B., Li, X., Huang, H., Mo, Y., Luk, T.-Y., Lau, T.T.-K., et al. (2020b). Acute SARS-CoV-2 Infection Impairs Dendritic Cell and T Cell Responses. *Immunity* **53**, 864–877.e5.

Highlights

- Longitudinal immunological analyses of COVID-19 from onset till outcome
- Early induction of SARS-CoV-2 specific T cells is associated with mild COVID-19
- Detection of functional SARS-CoV-2 specific T cells has prognostic value

eTOC blurb

Tan et al. longitudinally analysed the virological and immunological parameters in COVID-19 patients from disease onset till resolution or death. Early induction of functional SARS-CoV-2 specific T cells was observed in patients with mild disease and rapid viral clearance. This supports the prognostic value of detecting SARS-CoV-2 specific T cells.

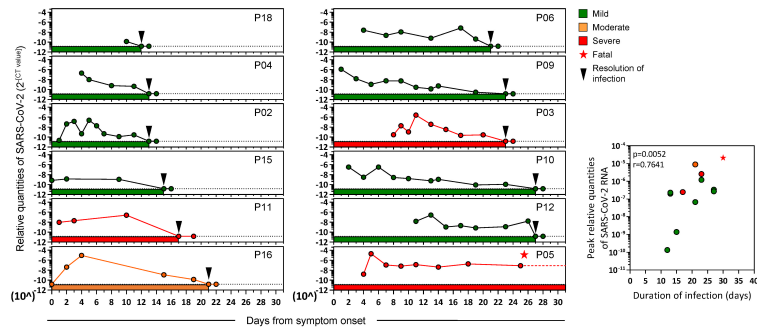


Figure 1

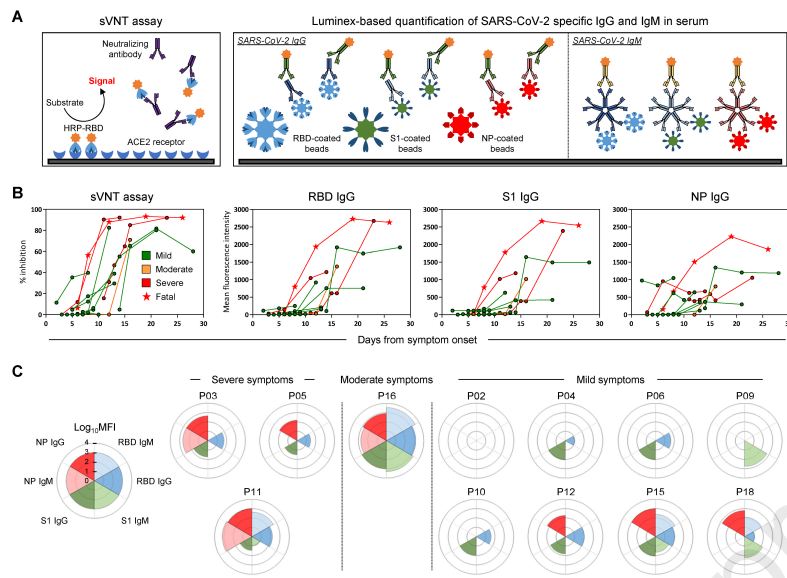


Figure 2

Figure 3

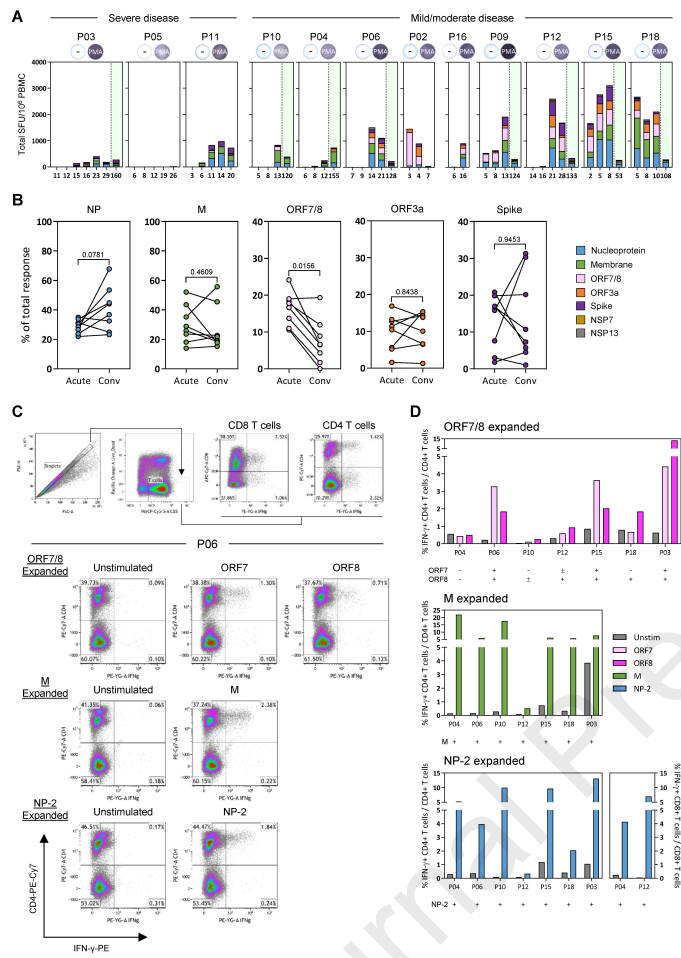


Figure 4