

Prevalence and risk factors for delirium in critically ill patients with COVID-19 (COVID-D): a multicentre cohort study



Brenda T Pun*, Rafael Badenes*, Gabriel Heras La Calle, Onur M Orun, Wencong Chen, Rameela Raman, Beata-Gabriela K Simpson, Stephanie Wilson-Linville, Borja Hinojal Olmedillo, Ana Vallejo de la Cueva, Mathieu van der Jagt, Rosalía Navarro Casado, Pilar Leal Sanz, Günseli Orhun, Carolina Ferrer Gómez, Karla Núñez Vázquez, Patricia Piñeiro Otero, Fabio Silvio Taccone, Elena Gallego Curto, Anselmo Caricato, Hilde Woien, Guillaume Lacave, Hollis R O'Neal Jr, Sarah J Peterson, Nathan E Brummel, Timothy D Girard, E Wesley Ely, Pratik P Pandharipande, for the COVID-19 Intensive Care International Study Group†

Summary

Background To date, 750 000 patients with COVID-19 worldwide have required mechanical ventilation and thus are at high risk of acute brain dysfunction (coma and delirium). We aimed to investigate the prevalence of delirium and coma, and risk factors for delirium in critically ill patients with COVID-19, to aid the development of strategies to mitigate delirium and associated sequelae.

Methods This multicentre cohort study included 69 adult intensive care units (ICUs), across 14 countries. We included all patients (aged ≥ 18 years) admitted to participating ICUs with severe acute respiratory syndrome coronavirus 2 infection before April 28, 2020. Patients who were moribund or had life-support measures withdrawn within 24 h of ICU admission, prisoners, patients with pre-existing mental illness, neurodegenerative disorders, congenital or acquired brain damage, hepatic coma, drug overdose, suicide attempt, or those who were blind or deaf were excluded. We collected de-identified data from electronic health records on patient demographics, delirium and coma assessments, and management strategies for a 21-day period. Additional data on ventilator support, ICU length of stay, and vital status was collected for a 28-day period. The primary outcome was to determine the prevalence of delirium and coma and to investigate any associated risk factors associated with development of delirium the next day. We also investigated predictors of number of days alive without delirium or coma. These outcomes were investigated using multivariable regression.

Findings Between Jan 20 and April 28, 2020, 4530 patients with COVID-19 were admitted to 69 ICUs, of whom 2088 patients were included in the study cohort. The median age of patients was 64 years (IQR 54 to 71) with a median Simplified Acute Physiology Score (SAPS) II of 40.0 (30.0 to 53.0). 1397 (66.9%) of 2088 patients were invasively mechanically ventilated on the day of ICU admission and 1827 (87.5%) were invasively mechanical ventilated at some point during hospitalisation. Infusion with sedatives while on mechanical ventilation was common: 1337 (64.0%) of 2088 patients were given benzodiazepines for a median of 7.0 days (4.0 to 12.0) and 1481 (70.9%) were given propofol for a median of 7.0 days (4.0 to 11.0). Median Richmond Agitation–Sedation Scale score while on invasive mechanical ventilation was -4 (-5 to -3). 1704 (81.6%) of 2088 patients were comatose for a median of 10.0 days (6.0 to 15.0) and 1147 (54.9%) were delirious for a median of 3.0 days (2.0 to 6.0). Mechanical ventilation, use of restraints, and benzodiazepine, opioid, and vasopressor infusions, and antipsychotics were each associated with a higher risk of delirium the next day (all $p \leq 0.04$), whereas family visitation (in person or virtual) was associated with a lower risk of delirium ($p < 0.0001$). During the 21-day study period, patients were alive without delirium or coma for a median of 5.0 days (0.0 to 14.0). At baseline, older age, higher SAPS II scores, male sex, smoking or alcohol abuse, use of vasopressors on day 1, and invasive mechanical ventilation on day 1 were independently associated with fewer days alive and free of delirium and coma (all $p < 0.01$). 601 (28.8%) of 2088 patients died within 28 days of admission, with most of those deaths occurring in the ICU.

Interpretation Acute brain dysfunction was highly prevalent and prolonged in critically ill patients with COVID-19. Benzodiazepine use and lack of family visitation were identified as modifiable risk factors for delirium, and thus these data present an opportunity to reduce acute brain dysfunction in patients with COVID-19.

Funding None.

Copyright © 2021 Elsevier Ltd. All rights reserved.

Introduction

Severe acute respiratory syndrome coronavirus 2 (SARS-CoV-2), which causes COVID-19, emerged as a

public health threat in December, 2019, in the city of Wuhan, China,¹ and a pandemic was subsequently declared by WHO in March, 2020.² According to the

Lancet Respir Med 2021

Published Online
January 8, 2021
[https://doi.org/10.1016/S2213-2600\(20\)30552-X](https://doi.org/10.1016/S2213-2600(20)30552-X)

See Online/Comment
[https://doi.org/10.1016/S2213-2600\(20\)30570-1](https://doi.org/10.1016/S2213-2600(20)30570-1)

For the French translation of the abstract see Online for appendix 1

For the Spanish translation of the abstract see Online for appendix 2

*Joint first authors

†Members listed in appendix 3

Critical Illness, Brain Dysfunction, and Survivorship Center (B T Pun DNP, O M Orun MS, W Chen PhD, R Raman PhD, B-G K Simpson MPH, S Wilson-Linville BSN, N E Brummel MD, T D Girard MD, Prof E W Ely MD, Prof P P Pandharipande MD), **Center for Health Services Research** (R Raman, Prof E W Ely, Prof P P Pandharipande), **Department of Anesthesiology, Division of Anesthesiology Critical Care Medicine** (Prof P P Pandharipande), **Department of Medicine, Division of Allergy, Pulmonary, and Critical Care Medicine** (B T Pun, B-G K Simpson, S Wilson-Linville, Prof E W Ely), and **Department of Biostatistics** (O M Orun, W Chen, R Raman), **Vanderbilt University Medical Center, Nashville, TN, USA; Geriatric Research, Education and Clinical Center, Veterans Affairs Tennessee Valley Healthcare System, Nashville, TN, USA** (Prof E W Ely); **Department of Anesthesiology and Surgical-Trauma Intensive Care, Hospital Clínico Universitario de Valencia, Valencia, Spain**

(Prof R Badenes MD);
 Department of Surgery,
 University of Valencia, Valencia,
 Spain (Prof R Badenes); INCLIVA
 Health Research Institute,
 Valencia, Spain (Prof R Badenes);
 Proyecto HU-CI, Hospital
 Comarcal Santa Ana, Motril,
 Spain (G Heras La Calle MD);
 Universidad Francisco de
 Vitoria, Madrid, Spain
 (G Heras La Calle); Department
 of Anesthesiology and Surgical
 Critical Care, Hospital
 Universitario Ramón y Cajal,
 Madrid, Spain
 (B Hinojal Olmedillo MD);
 Department of Intensive Care,
 Hospital Universitario de Alava,
 Vitoria Gasteiz, Spain
 (A Vallejo de la Cueva PhD);
 Department of Intensive Care
 Adults, Erasmus MC University
 Medical Center, Rotterdam,
 Netherlands
 (Prof M van der Jagt MD);
 Department of Anesthesiology
 and Surgical Critical Care,
 Hospital Universitario 12 de
 Octubre, Madrid, Spain
 (R Navarro Casado MD);
 Department of Intensive Care
 Complejo Hospitalario de
 Toledo -Virgen de la Salud
 Hospital, Toledo, Spain
 (P Leal Sanz MD); Department of
 Anesthesiology and Intensive
 Care, Faculty of Medicine,
 Istanbul University, Istanbul,
 Turkey (G Orhun MD);
 Department of Anesthesiology
 and Critical Care, Consorcio
 Hospital General Universitario,
 Valencia, Spain
 (C Ferrer Gómez MD);
 Department of Intensive Care,
 Hospital de Barcelona,
 Barcelona, Spain
 (K Núñez Vázquez MD);
 Department of Anesthesiology
 and Intensive Care Medicine,
 Hospital Universitario Gregorio
 Marañón, Madrid, Spain
 (P Piñero Otero MD);
 Department of Intensive Care,
 Hospital Erasme, Brussels,
 Belgium (Prof F S Taccone MD);
 Department of Intensive Care,
 Hospital Universitario San
 Pedro de Alcántara, Cáceres,
 Spain (E Gallego Curto MD);
 Neuro Intensive Care Unit,
 Fondazione Policlinico
 Universitario Agostino Gemelli
 IRCCS, Università Cattolica del
 Sacro Cuore, Rome, Italy
 (A Caricato MD); Division of
 Emergencies and Critical Care,
 Oslo University Hospital, Oslo,
 Norway (H Woien PhD);
 Medical-Surgical Intensive Care

Research in context

Evidence before this study

We searched MEDLINE and Web of Science for original peer-reviewed cohort studies describing the prevalence of delirium in patients with COVID-19 admitted to intensive care units, published between Jan 1 and Aug 22, 2020, using the search terms “(covid19” AND “ICU” AND “delirium” OR “encephalopathy” AND “prospective” OR “retrospective” OR “follow-up” OR “longitudinal)”. Only reports published in English that included at least five participants were considered. Our search yielded one single-centre study that reported delirium or abnormal neurological examination results for 118 (84.3%) of 140 patients with COVID-19 admitted to the intensive care unit (ICU).

Added value of this study

To our knowledge, this cohort study of more than 2000 critically ill patients with COVID-19 from 69 ICUs across 14 countries is the largest study to date to assess the epidemiology of coma and delirium in critically ill patients with COVID-19. The study highlights a high burden of acute brain dysfunction (>80% of patients had coma and >50% developed delirium) that lasted for a median of 2 weeks, which might have implications for survivorship (eg, acquired dementia). The two strongest modifiable predictors of delirium were benzodiazepine infusion (around 60% higher risk of delirium) and family visitation (around 30% lower risk of delirium).

Implications of all the available evidence

Widely adopted guidelines for the management of pain, agitation, delirium, and immobility, and practice frameworks, such as the ABCDEF bundle, have contributed to a substantial reduction in the use of benzodiazepine-based sedation in the past decade (from about 80% to <10%) and in delirium prevalence in mechanically ventilated patients (from approximately 80% to 50%). Delirium has also been shown to be a significant predictor of acquired dementia after critical illness. This study of a large, representative sample of critically ill patients shows that clinicians have reverted to outdated and potentially harmful treatment strategies of deep sedation with widespread use of benzodiazepine infusions, immobilisation, and isolation from families because of the COVID-19 pandemic; these changes in clinical practice are associated with significantly higher prevalence and duration of delirium and coma, portending a major risk for ICU-related dementia and survivorship. Since no pharmaceutical therapies are available for the treatment of COVID-19 at present, this study provides evidence that clinicians should aim to use supportive and proven therapies that avoid deep sedation with benzodiazepine infusions, and facilitate safe in-person or virtual visitation for patients with COVID-19.

online interactive COVID-19 dashboard, hosted by Johns Hopkins University (Baltimore, MD, USA) by December, 2020, 80 million people had been infected, and 1.7 million people had died as a result of COVID-19 and associated complications. Since the pandemic began, it is estimated that around 1.5 million patients have been admitted to intensive care units (ICUs) worldwide, of whom, 750 000 patients have required mechanical ventilation for viral pneumonia and acute respiratory distress syndrome (ARDS).^{3,4}

COVID-19 has been shown to cause acute organ dysfunction; however, brain dysfunction has not been systematically studied in large representative populations of ICU patients.⁵⁻⁷ Coma and delirium are serious manifestations of acute brain dysfunction, which often accompany systemic critical illness, and delirium has been associated with poor outcomes in critically ill patients without COVID-19, including mortality, cognitive dysfunction, and subsequent dementia in survivors.⁸ Previously, delirium has been reported to affect up to 70% of patients who require mechanical ventilation,⁹ but a 2018 multicentre study that adhered to guideline-recommended practices¹⁰ reported delirium prevalence rates of less than 50%.¹¹ Data from smaller cohorts of mechanically ventilated patients with COVID-19 have suggested that these practice guidelines are not being adhered to, and patients are often prescribed higher doses

of sedatives and analgesics than patients without COVID-19.^{12,13} This approach might be secondary to concerns that the acute respiratory failure due to COVID-19 is markedly different from acute respiratory failure due to bacterial pneumonia or other causes of sepsis,¹⁴ reports of propofol shortages, the use of non-ICU trained staff to treat patients during surges in patient numbers, prolonged use of neuromuscular blockade, and concerns regarding propofol infusion syndrome, self-extubation, and proning.¹⁵⁻¹⁷

Although most previous studies of neurological manifestations of COVID-19⁷ did not systematically evaluate patients for delirium despite the availability of validated monitoring tools, one small ICU study reported a delirium prevalence of 84%,¹² whereas a delirium prevalence of 11–12% has been reported among the general population of hospitalised patients with COVID-19.^{18,19} Although the true prevalence of delirium in critically ill patients with COVID-19 is unknown, patients with COVID-19 are at high risk of delirium due to systemic inflammation and neuroinflammation, other organ system failures, increased risk of thrombosis, and the effects of deep sedative strategies, prolonged mechanical ventilation, and social isolation from families.^{12,20,21}

We aimed to elucidate sedation practices, ICU resource constraints, the prevalence of coma, and the prevalence

of, and risk factors for delirium in the ongoing pandemic to guide clinicians and mitigate delirium and associated long-term cognitive consequences for patients with COVID-19 in the future.

Methods

Study design and participants

For this multicentre, retrospective cohort study, we invited institutions that were members of the International Research Project for the Humanization of ICU (Proyecto-Humanizando los Cuidados Intensivos [Proyecto HU-CI]) network or Neuro-Intensive Care section of the European Society of Intensive Care Medicine, or had previously collaborated with members of the study steering committee (BTP, RB, GHLC, EWE, and PPP). The steering committee selected 69 sites from 14 countries for inclusion in the study (appendix 3 p 3). Institutions were eligible if patients with COVID-19 were receiving treatment in the ICU, they were routinely assessed for delirium in the ICUs, could secure local regulatory approval, and were willing to commit resources for a 2-week data collection period.

Researchers at Vanderbilt University Medical Center (Nashville, TN, USA), INCLIVA Research Health Institute (Valencia, Spain), and Proyecto HU-CI (Madrid, Spain) coordinated the study.

Between May 12 and 26, 2020, study personnel abstracted data about all patients with COVID-19 who met study eligibility criteria and were admitted to their ICUs before April 28, 2020—a date selected to ensure that at least 28-day outcomes would be available by database closure (May 26, 2020). Beginning with the first eligible patient admitted to their ICUs and continuing with consecutively admitted eligible patients, study personnel at study sites abstracted data on as many eligible patients as possible during the 2-week data collection period. To standardise and synchronise data collection at the sites, we provided training materials (30 min training video, an educational slide set, and a frequently asked questions manual) based on the study protocol.

Patients (aged ≥ 18 years) were eligible if they were admitted to participating ICUs with SARS-CoV-2 infection. We excluded patients who were moribund (ie, did not survive >24 h) or had life-support measures withdrawn within 24 h of ICU admission; prisoners; patients with pre-existing mental illness (eg, schizophrenia, psychosis, or major depression), neurodegenerative disorders (eg, dementia or Parkinson's disease), congenital or acquired brain damage (eg, stroke in the 2 weeks before ICU admission, subarachnoid haemorrhage, ongoing seizures, anoxic brain injury, or traumatic brain injury); hepatic coma; drug overdose; suicide attempt; or those who were blind or deaf.

The institutional review board of Vanderbilt University Medical Center approved the study. Ethical approval was also obtained at each site from local regulatory boards before data collection. The requirement for written

informed consent was waived since data were de-identified and collected retrospectively.

Data collection

De-identified data were extracted from electronic medical records and entered directly into a REDCap database.²² We recorded baseline patient characteristics, including (but not limited to) age on hospital admission, sex, Simplified Acute Physiology Score (SAPS) II within the first 24 h of ICU admission (0–163 points), history of smoking, alcohol abuse, and hearing or vision impairment. A full list of data collected from patients is included in the study protocol.

We also collected hospital stay data and daily ICU data between admission and discharge from the ICU, death, or 21 days after index ICU admission, whichever occurred first. These data included treatment with sedative and analgesic continuous infusions, sedation level (Richmond Agitation-Sedation Scale [RASS],²³ Sedation-Agitation Scale,²⁴ or the Glasgow Coma Scale²⁵), delirium (Confusion Assessment method for the ICU [CAM-ICU]²⁶ or the Intensive Care Delirium Screening Checklist [ICDSC], done prospectively by the medical team),²⁷ type of respiratory support (invasive mechanical ventilation, non-invasive mechanical ventilation, high-flow nasal cannula, or low-flow nasal cannula), restraint use, treatment with continuous vasopressors or inotropes, use of antipsychotics, performance of the ABCDEF bundle,^{10,28} duration of ICU and hospital stay, and vital status (dead or alive) at 28 days. The ABCDEF bundle is a standard of care bundle of guideline-recommended assessments and practice; it includes six elements: element A (assess, prevent, and manage pain), element B (both spontaneous awakening trials and spontaneous breathing trials), element C (choice of analgesia and sedation), element D (assess, prevent, and manage delirium), element E (early mobility and exercise), and element F (family engagement and empowerment).²⁹ For this study, we only assessed family visitations for the F element of the bundle. We collected data about participating sites, including their relevant practice standards and how they were affected during the COVID-19 pandemic. Mental status was defined as follows: coma was defined as a day when the patients were unresponsive to verbal stimulation (RASS equivalent score -4 or -5 or Glasgow Coma Scale score of <8); patients were considered delirious if they were responsive to verbal stimulation and had a positive delirium assessment scale assessment (CAM-ICU or ICDSC) documented. If a patient was responsive to verbal stimulation but was not delirious, they were considered to be awake without delirium.

Outcomes

The primary outcome was to determine the prevalence of delirium and coma in critically ill patients with COVID-19, and risk factors associated with the development of delirium. We also investigated the predictors of the number of days alive without delirium

Unit, Centre Hospitalier de Versailles, Le Chesnay, France (G Lacave MD); Pulmonary and Critical Care Medicine, Our Lady of the Lake Regional Medical Center, Baton Rouge, LA, USA (H R O'Neal Jr MD); Department of Clinical Nutrition and Department of Pulmonary and Critical Care Medicine, Rush University Medical Center, Chicago, IL, USA (S J Peterson PhD); Department of Internal Medicine, Division of Pulmonary, Critical Care and Sleep Medicine, The Ohio State University Wexner Medical Center, Columbus, OH, USA (N E Brummel); Department of Critical Care Medicine, Clinical Research, Investigations, and Systems Modeling of Acute Illness Center, University of Pittsburgh School of Medicine, Pittsburgh, PA, USA (T D Girard)

Correspondence to:

Prof Rafael Badenes, Department of Surgery, University of Valencia, Valencia 46010, Spain
rafaelbadenes@gmail.com

See Online for appendix 3

For the **interactive dashboard** of global COVID-19 cases see <https://arcg.is/OfHmTX>

For the **study protocol** see <https://osf.io/e7bxg/>

	Study sites (n=69)
Number of hospital beds	
<500	21 (30%)
500-1000	32 (46%)
>1000	16 (23%)
Hospital type	
Teaching	65 (94%)
Non-teaching	4 (6%)
Location	
Europe	51 (74%)
North America or central America	13 (19%)
South America	3 (4%)
Africa	2 (3%)
Number of ICU beds before the COVID-19 pandemic	19 (13-30)
Sites that added additional ICU beds during study period	58 (84%)
Additional beds added	24 (12-39)
Protocol in place for identifying delirium	62 (90%)
Protocol in place for managing delirium	47 (68%)
Delirium assessment tool	
Confusion Assessment Method for the ICU	65 (94%)
Intensive Care Delirium Screening Checklist	4 (6%)
Level of sedation assessment tool	
Richmond Agitation-Sedation Scale	67 (97%)
Sedation-Agitation Scale	2 (3%)
Restricted visitation during the study period due to COVID-19	
Visitors restricted to certain times of the day	4/68 (6%)
Visitors restricted to only when a patient is dying	36/68 (53%)
Visitors completely restricted (no visitors allowed)	28/68 (41%)
Staff reported facilitated virtual contact* between the patient and family or friends	
Full duration of patient's stay	62/66 (94%)
Only in situations when a patient was dying	4/66 (6%)
Shortage of available resources during the time the study period	
Shortage of critical care providers	23/29 (79%)
Shortage of personal protective equipment for providers	21/29 (72%)
Shortage of ventilators	16/29 (55%)
Shortage of ICU beds	15/29 (52%)
Shortage of sedatives	11/29 (38%)
Shortage of health-care providers	10/29 (34%)
Shortage of hospital beds	6/29 (21%)
Shortage of intravenous tubing sets	5/29 (17%)
Shortage of extracorporeal membrane oxygenation circuit tubing sets	5/29 (17%)
Shortage of mechanical ventilators	3/29 (10%)
Shortage of analgesics	1/29 (3%)
Shortage of vasopressors	1/29 (3%)

Data are n (%), median (IQR), or n/N (%). ICU=intensive care unit. *Via telephone, mobile phone, iPad or tablet, or laptop.

Table 1: Characteristics of study sites

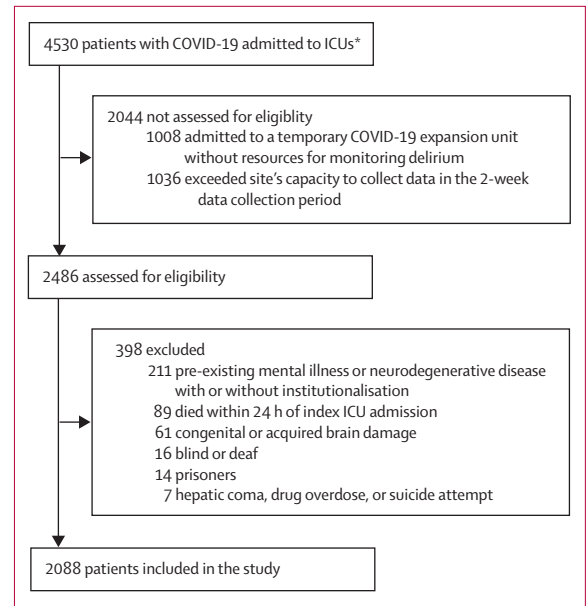


Figure 1: Study flow diagram

ICU=intensive care unit. *All patients who were COVID-19 positive and admitted to an ICU from the first reported case in each ICU until April 28th, 2020, were considered for inclusion.

or coma using a computation of the number of days within the 21-day study period where the patient was alive and free of delirium or coma. This variable was truncated at 21 days because the study design only collected daily assessment data for a maximum of 21 days, ICU discharge or death, whichever occurred first. Days alive without delirium or coma accounts for the contribution of both death and coma, such that patients with more days alive without delirium or coma have a better outcome since they are alive and have more days free of both delirium and coma. The secondary outcome was index ICU length of stay, number of ventilator-free days, and vital status at day 28. Ventilator-free days indicates the number of days the patient was alive and free of the mechanical ventilation (invasive or non-invasive) in a 28-day period. Ventilator-free days account for the contribution of death, such that patients with a higher number of ventilator-free days have a better outcome, since they are alive and breathing without mechanical ventilation.

Statistical analysis

According to the Strengthening the Reporting of Observational Studies in Epidemiology (STROBE) guidelines, patient characteristics are expressed as median (IQR) for continuous variables, and n (%) for categorical variables.³⁰

To evaluate risk factors associated with the probability of being delirious the following day, we used a multivariable multinomial regression model, which included baseline risk factors and risk factors on the

	Patients (n=2088)
Age, years*	64.0 (54.0–71.0)
Sex	
Men	1497 (71.7%)
Women	591 (28.3%)
Race†	
White	1598 (76.5%)
Black or African Descent	145 (6.9%)
American Indian or Alaska Native	133 (6.4%)
Asian	26 (1.2%)
Mixed race	14 (0.7%)
Other	172 (8.2%)
Vision or hearing impairment	110 (5.3%)
Current smoker or alcohol abuse	226 (10.8%)
Charlson comorbidity score‡	1.0 (0.0–2.0)
Comorbidities on admission	
Congestive heart failure	139 (6.7%)
Chronic obstructive pulmonary disease	241 (11.5%)
Diabetes	483 (23.1%)
Liver disease	48 (2.3%)
Renal disease	134 (6.4%)
Simplified Acute Physiology Score II§	40.0 (30.0–53.0)
Diagnosis at enrolment	
Acute respiratory distress syndrome	2044 (97.9%)
Mild¶	236 (11.5%)
Moderate	929 (45.5%)
Severe**	758 (37.1%)
Unknown	121 (5.9%)
Other††	44 (2.1%)
Respiratory support on intensive care unit admission	
Invasive mechanical ventilation	1397 (66.9%)
Non-invasive mechanical ventilation	173 (8.3%)
High flow nasal cannula	296 (14.2%)
Low flow nasal cannula or no additional oxygen	222 (10.6%)
Use of prone positioning	1317 (63.1%)
Duration of proning, days	4.0 (2.0–6.0)
Use of continuous opioid infusion while on invasive mechanical ventilation‡‡	
Ever used	1659 (79.5%)
Duration of use, days	11 (7–17)

(Table 2 continues in next column)

	Patients (n=2088)
(Continued from previous column)	
Use of continuous sedative infusion while on invasive mechanical ventilation	
Benzodiazepine	
Ever used	1337 (64.0%)
Duration of use, days	7.0 (4.0–12.0)
Propofol	
Ever used	1481 (70.9%)
Duration of use, days	7.0 (4.0–11.0)
Dexmedetomidine	
Ever used	920 (44.1%)
Duration of use, days	4.0 (2.0–7.0)
Clonidine	
Ever used	191 (9.1%)
Duration of use, days	5.0 (2.0–8.0)
Ketamine	
Ever used	140 (6.7%)
Duration of use, days	4.0 (2.0–6.0)
Sevoflurane	
Ever used	47 (2.3%)
Duration of use, days	3.0 (1.0–4.0)

Data are median (IQR) or n (%). Some percentages do not sum to 100 because of rounding. Summary statistics were reported for non-missing values. PaO₂=partial pressure arterial oxygen. FiO₂=fraction of inspired oxygen. *Six patients were aged >90 years and thus their ages were rounded down to 90 years when entered into the database to maintain regulatory rules for de-identified data; in accordance with country regulatory rules, for 44 patients included at two participating sites, age values were rounded to the nearest ten. †Race was recorded as entered into the electronic health record; 56 (2.7%) of 2088 patients had no race reported in the medical record or the participating site could not report their race due to regulatory limitations, thus these patients were included in the other category. ‡Scores range from 0 to 33, with higher scores indicating a higher burden of coexisting illness. §Scores range from 0 to 163 with higher scores indicating greater severity of illness; a median score of 40 represents a patient population with moderate severity of critical illness. ¶Defined as a PaO₂/FiO₂ ratio of 200–300. ||Defined as a PaO₂/FiO₂ ratio of 100–199. **Defined as a PaO₂/FiO₂ ratio of <100. ††Other diagnosis represents patients who were admitted to the hospital and required treatment in the intensive care unit for a reason other than COVID-19, who then tested positive; such diagnoses included diabetic ketoacidosis, acute myocardial infarction, cardiac arrhythmias, post-operative surgery surveillance, acute kidney failure, and acute gastrointestinal bleeding. ‡‡Infusions included remifentanyl, sufentanil, fentanyl, morphine, and hydromorphone.

Table 2: Demographic and clinical characteristics of patients

preceding day. Other states (such as coma, awake without delirium, death, and discharge) were considered as competing risks. Covariates included age, sex, SAPS II score, baseline vision or hearing impairment, smoking status or alcohol abuse, and daily data for respiratory support type, vasopressors, position (prone vs supine), restraint use, deepest sedation level (in RASS equivalents), exposure to sedatives (categorised into three mutually exclusive variables: received benzodiazepine infusions on a given day, received a sedative infusion other than a benzodiazepine on a given day, or received no sedative infusion on a given day), exposure to opioids,

antipsychotics, and oral anxiolytics or hypnotics, and performance of the ABCDEF bundle. In contrast to previous publications,^{29,31} we used a modification of the ABCDEF bundle performance as a covariate in our model to investigate the contributions of specific elements of the bundle to outcomes in patients with COVID-19 and thus provide areas of focus for clinicians. To study the effect of restricted visitation policies in the ICU secondary to COVID-19, we analysed the performance of the F element of the ABCDEF bundle as a separate covariate. We used the three categories of sedative exposure as a covariate to determine the true impact of the C element (choice of sedative).

	Patients (n=2088)
Coma	
Prevalence (ever comatose in 21 days)	1704 (81.6%)
Coma duration, days*	10.0 (6.0–15.0)
Persistently comatose until death or day 21	313 (15.0%)
Delirium†	
Prevalence (ever delirious in 21 days)	1147 (54.9%)
Delirium duration, days*	3.0 (2.0–6.0)
Delirium subtype‡§	
Ever hypoactive	388/925 (41.9%)
Hypoactive only delirium duration, days	2.0 (1.0–4.0)
Ever hyperactive	479/925 (51.8%)
Hyperactive only delirium duration, days	2.0 (1.0–4.0)
Acute brain dysfunction (coma or delirium)	
Coma or delirium duration, days	12.0 (7.0–18.0)
Days alive without delirium or coma in 21 days¶	5.0 (0.0–14.0)
Index length of stay in ICU in 28 day period	14.0 (8.0–25.0)
Ventilator-free days in 28 day period	7.0 (0.0–20.0)
Vital status on day 28	
Dead	601 (28.8%)
Alive	1416 (67.8%)
Unknown	71 (3.4%)
Data are n (%), median (IQR), or n/N (%). ICU=intensive care unit. *If a patient was both delirious and comatose on the same day, that day was counted for both delirium duration and coma duration outcomes since they were examined as separate outcomes. †Patients were not screened for coma or delirium after discharge from the ICU and thus during the days after index ICU discharge until the day of death or the end of 21 days (whichever occurred first) patients were considered to be awake without delirium. ‡Ever hypoactive and ever hyperactive delirium categories during the 21-day study period were not mutually exclusive. §Data on delirium subtype not reported for 222 of 1147 patients. ¶Number of days within the 21-day study period on which patients were alive and free of delirium or coma; this variable was truncated at 21 days because the study design only collected daily assessment data for a maximum of 21 days, ICU discharge or death, whichever happened first. Number of days patients were alive and did not require mechanical ventilation (invasive or non-invasive) in a 28-day period.	
Table 3: Patient outcomes	

For the statistical analysis plan see <https://osf.io/xqubt/>

To evaluate risk factors for delirium and coma-free days (calculated as the number of days alive without delirium or coma during the 21 days after ICU admission), we used a proportional odds logistic regression model. Since delirium and coma-free days is a continuous, ordinal outcome that is non-normally distributed, a proportional odds logistic regression model for ordinal dependent variables was considered the best choice, as prespecified in the statistical analysis plan. Proportional odds assumptions were evaluated using graphical methods and were met satisfactorily. Covariates for this model were chosen a priori and included baseline variables including age, sex, SAPS II score, baseline vision or hearing impairment, smoking and alcohol abuse, and ICU day 1 data for respiratory support type, vasopressors, position (prone vs supine), restraint use, deepest sedation level (in RASS equivalents), and exposure to sedatives, opioids, anti-psychotics, and oral anxiolytics or hypnotics.

We reported our results as adjusted odds ratios (ORs), with 95% CIs.³² For continuous variables, comparisons shown in parentheses in figures correspond with the 75th versus 25th percentile values of that variable. The model for days alive without delirium or coma included all patients for whom delirium or coma assessments were documented on 90% of days spent in the index ICU. The multinomial model further excluded patients who had less than 2 days of index ICU stay because the model used daily covariates from the preceding day. We also did sensitivity analyses that included all patients regardless of the proportion of days with documentation of delirium or coma assessment. Restricted cubic splines for continuous variables were incorporated into the models. To account for correlation between patients at a specific site or repeated measures per patient, we adjusted SEs using Huber-White sandwich estimation.³³ Model assumptions were evaluated graphically. Proportional odds assumption was checked using logistic regression with multiple cutoffs.³⁴

Missing data for individual clinical variables were imputed using clinical imputation rules when appropriate, and the remaining missing data (<1%) were imputed using model-based single imputation strategies versus multiple imputation because the amount of missing data was low. In all cases, decisions and processes were documented both in data management and analysis code and in statistical reports.

Before modelling, we did redundancy analyses to assess multicollinearity between independent variables using an adjusted R^2 cutoff of 0.7. When multicollinearity was identified, we eliminated the lowest ranked covariate per a prespecified rank list of covariates listed in the statistical analysis plan.

All analyses were done using R software (version 3.6.2 or above). For the multinomial model the *mlogit*, *mice*, *sandwich*, and *aod* packages were used. For the proportional odds model the *rms*, *Hmisc*, and *mice* packages were used. All tests were two-sided, and $p < 0.05$ was considered statistically significant.

Role of the funding source

There was no funding source for this study. BTP, RB, and PPP had full access to the data and had final responsibility for the decision to submit for publication.

Results

Between Jan 20 and April 28, 2020, 4530 patients with COVID-19 were admitted to 69 ICUs. Characteristics of the study sites, including changes secondary to the pandemic, are shown in table 1. The sites were located in 14 countries across Europe, North America, central America, South America, and Africa, with 50% of sites located in Spain (appendix 3 pp 3–7). More than two-thirds of hospitals had more than 500 hospital beds and 94% were teaching hospitals. The majority of sites used the CAM-ICU tool for delirium assessments and the RASS tool for sedation assessments, and had protocols in

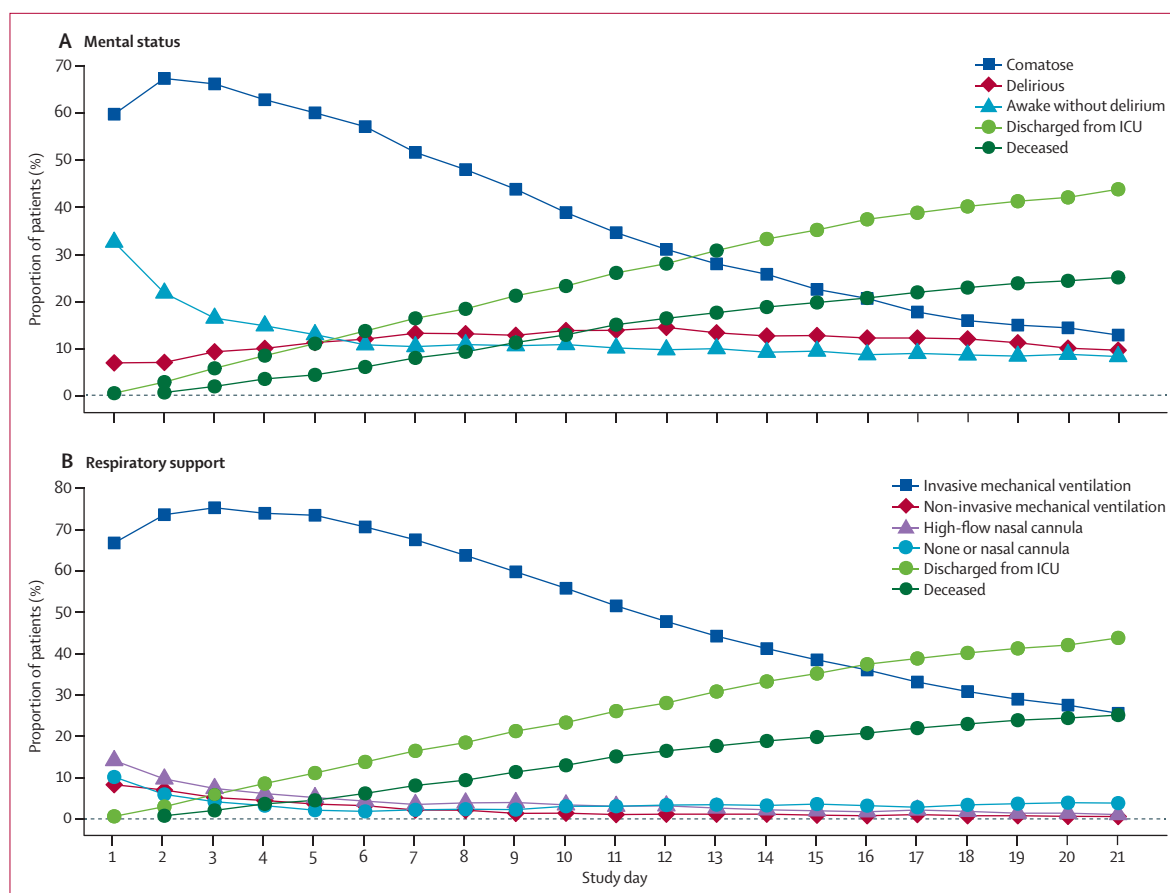


Figure 2: Mental status and respiratory support status in the 21-day study period (n=2088)

(A) Mental status over time. Coma was defined as a day when the patients were unresponsive to verbal stimulation (Richmond Agitation-Sedation Scale score of -4 or -5 or Glasgow Coma Scale score of <8). Patients were considered delirious if they had a positive delirium assessment scale assessment (Confusion Assessment Method for the Intensive Care Unit or the Intensive Care Delirium Screening Checklist) documented. All other patients were considered awake without delirium. Discharge represents discharge from the intensive care unit. (B) Respiratory status over time. ICU=intensive care unit.

place for managing delirium. Of the 69 ICUs included, 84% increased their ICU bed capacity with a median increase of 24 beds (IQR 12–39), during the COVID-19 pandemic, and 29 (42%) reported a shortage of adequate resources, especially shortages of ICU providers, personal protective equipment, ventilators, ICU beds, sedatives, and intravenous infusion tubing sets (table 1).

Of the 4530 patients admitted to ICUs, 1008 were not screened because they were admitted to an ICU at a site that did not monitor for delirium and 1036 patients were admitted to sites that did not have capacity to screen all eligible patients and collect data in the 2-week collection period. Thus, sites were able to collect data from 2486 consecutive patients during the 2-week data collection period (appendix 3 p 8). Of the 2486 patients whose medical records were assessed for eligibility, 398 met at least one exclusion criteria, thus 2088 patients were included in the study cohort (figure 1). The median age of the cohort was 64.0 years (IQR 54.0 to 71.0), with a median Charlson comorbidity score of 1.0 (0.0 to 2.0), and patients were deemed to be moderately

ill on admission (median SAPS II score 40.0 [30.0 to 53.0]; table 2). 1497 (71.7%) of 2088 patients were men and 591 (28.3%) were women. 2044 (97.9%) of 2088 patients were admitted with acute respiratory failure, and 1866 (89.4%) required invasive mechanical ventilation, non-invasive mechanical ventilation, or high-flow nasal cannula on the day of ICU admission; 758 (37.1%) had severe ARDS (defined as a partial pressure of arterial oxygen to fraction of inspired oxygen ratio of <100) and 1317 (63.1%) were placed in the prone position for a median of 4.0 days (IQR 2.0 to 6.0). 1827 (87.5%) of 2088 patients required invasive mechanical ventilation at some point during their hospitalisation. Most patients received continuous sedative infusions while on mechanical ventilation: 1337 (64.0%) were given benzodiazepines for a median of 7.0 days (4.0 to 12.0) and 1481 (70.9%) were given propofol for a median of 7.0 days (4.0 to 11.0). Median RASS score while on invasive mechanical ventilation was -4 (IQR -5 to -3) and -5 (-5 to -4) for the first 8 days (appendix 3 p 9).

	Performance of ABCDEF bundle on days eligible for assessment (n/N [%])*	Performance of ABCDEF bundle on all study days (n=27 022)
Element A (assess, prevent, and manage pain)	19 827/27 022 (73.4%)	19 827 (73.4%)
Element B		
Spontaneous awakening trial	5165/21 699 (23.8%)	5165 (19.1%)
Spontaneous breathing trial	5174/22 687 (22.8%)	5174 (19.1%)
Element C		
Assessment of sedation-agitation	26 501/27 022 (98.1%)	26 501 (98.1%)
Avoidance of benzodiazepine†	11 892/22 687 (52.4%)	11 892 (44.0%)
Element D (assess, prevent, and manage delirium)	11 044/13 330 (82.9%)	11 044 (40.9%)
Element E (early mobility and exercise)	4519/13 330 (33.9%)	4519 (16.7%)
Element F (family engagement and empowerment)	4599/27 022 (17.0%)	4599 (17.0%)
In-person visitation with family or friends	2192/27 022 (8.1%)	2192 (8.1%)
Virtual visitation only with family or friends	2407/27 022 (8.9%)	2407 (8.9%)

n/N (%)=days performed/eligible days. Daily performance of the ABCDEF bundle is shown for all cumulative ICU days for 2075 patients for a total of 27 022 days (13 patients who were only in the ICU for 1 day were excluded). Day of ICU discharge and day of death were not included. ICU=intensive care unit. *Daily performance criteria for each bundle element was defined as follows: element A, at least one pain assessment completed on all available days; element B, a spontaneous awakening trial (ie, daily sedation cessation) was done on days when patients were receiving continuous infusions, and a spontaneous breathing trial was done on days when patients were receiving invasive mechanical ventilation (eligible days included days when patients were on mechanical ventilation and might not have passed safety screen for a spontaneous awakening or breathing trial); element C, at least one agitation-sedation assessment completed on all available days; element D, at least one delirium assessment completed on all days when patients were not in a coma; element E, any exercise or mobility (ie, active range of motion, sit on edge of bed, stand, walk) occurred on all days when patients were not in a coma; element F, in-person visit or virtual connection via an electronic device (eg, cell phone, tablet, or laptop) with family or friends on all available days. †An additional criterion was added for the C element of the bundle for this study: number of days that benzodiazepines were avoided when patients were on invasive mechanical ventilation; clinical practice guidelines recommend avoiding this drug class for routine sedation management, however, this is not typically used to evaluate compliance or performance for this element of the bundle and thus was not included in the criteria used for our modelling.

Table 4: ABCDEF bundle performance

1704 (81.6%) of 2088 patients were comatose for a median of 10.0 days (IQR 6.0–15.0), and 1147 (54.9%) were delirious for a median of 3.0 days (2.0–6.0; table 3, figure 2). Delirium could not be assessed in 313 (15.0%) of 2088 patients due to coma that persisted until death or study day 21. Of 1704 patients with coma, 16 (<1%) were not on concomitant sedation. Acute brain dysfunction (coma or delirium) affected patients for a median of 12.0 days (IQR 7.0–18.0). During the 21-day study period, patients were alive without delirium or coma for a median of 5.0 days (0.0–14.0). 601 (28.8%) of 2088 patients died within 28 days of admission, with most of those deaths occurring in the ICU.

Patients were assessed for pain (ABCDEF bundle element A) at least once on 73% of eligible days, for sedation-agitation level (element C) at least once on 98% of eligible days, and delirium (element D) at least once on 83% of eligible days (table 4). Benzodiazepines were avoided (element C) on 52.4% of eligible days a patient was on invasive mechanical ventilation. Less than 25% of eligible patient-days included either of the two components of element B, with spontaneous awakening trials done on 23.8% of eligible days and spontaneous breathing trials done on 22.8% of eligible days. Some type of early mobility (element E),

including active range of motion exercises, occurred on 33.9% of eligible days. Only 17% of patient-days included any type of visitation with family or friends (in-person or virtual), and only 8.1% of eligible days involved an in-person visit from family or friends.

Delirium during the previous day was associated with a 17-times higher risk of being delirious the next day (OR 17.84 [95% CI 15.10–21.07], $p<0.0001$) and coma during the previous day was associated with a six-times higher risk of coma the next day (6.34 [5.30–7.58], $p<0.0001$), when compared with being awake without delirium (figure 3). Similarly, older age (OR 1.13 [1.03–1.25], $p=0.036$), higher SAPS II score (1.17 [1.07–1.29], $p=0.0013$), smoking or alcohol abuse (1.37 [1.13–1.67], $p=0.0013$), invasive mechanical ventilation (1.48 [1.17–1.87], $p=0.0013$), vasopressors (1.25 [1.10–1.43], $p=0.0009$), restraint use (1.32 [1.16–1.50], $p<0.0001$), antipsychotics (1.59 [1.36–1.85], $p<0.0001$), and sedative benzodiazepine infusions (1.59 [1.33–1.91], $p<0.0001$), and continuous opioid infusions (1.39 [1.21–1.60], $p<0.0001$) were each associated with higher risk of delirium the next day. Family visitation (bundle element F), however, was associated with a 27% lower risk of delirium (OR 0.73 [0.63–0.84], $p<0.0001$; figure 3).

Older age (OR 0.62 [95% CI 0.52–0.74], $p<0.0001$), higher SAPS II scores (0.51 [0.42–0.62], $p<0.0001$), smoking or alcohol abuse (0.65 [0.47–0.88], $p=0.0056$), invasive mechanical ventilation on day 1 (0.17 [0.11–0.26], $p<0.0001$), and vasopressor use on day 1 (0.73 [0.59–0.92], $p=0.0070$) were independently associated with fewer delirium and coma-free days, whereas female sex (1.34 [1.08–1.67], $p=0.0087$) was associated with more delirium-free and coma-free days during the 21-day study period (figure 4). Redundancy analysis showed that use of continuous sedation, depth of sedation, and opioid use on day 1 were highly correlated with the use of invasive mechanical ventilation and thus, these variables were not included in the final model.

Results of sensitivity analyses, which included patients who had more than 10% missing delirium assessments and therefore required imputation, were qualitatively the same as those of the primary regression models (data not shown).

Discussion

In this large, international cohort study of more than 2000 patients with severe COVID-19, acute brain dysfunction (coma or delirium) was more common and more prolonged than observed in other studies of patients with acute respiratory failure without COVID-19.^{8,11} Patients with COVID-19 also received treatment with sedatives for a prolonged duration: two-thirds of patients were given benzodiazepines and propofol for a median of 7 days. As a result of the COVID-19 pandemic, many ICUs were operating in resource-constrained environments, and despite demonstrated efficacy in previous studies, evidenced-based

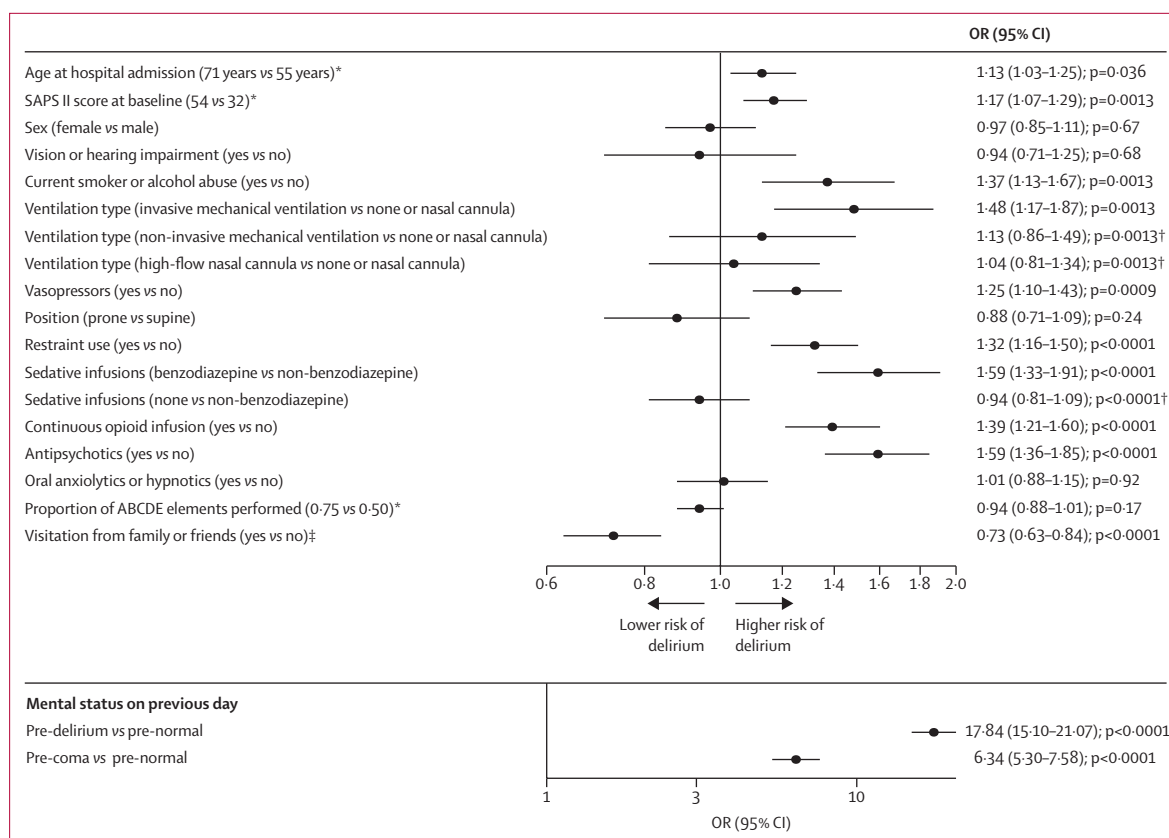


Figure 3: Forest plot of daily probability of delirium

All patients who had at least 90% delirium or coma assessments during their index ICU stay and 2 days of ICU stay were included in this analysis (n=2049). Other states, such as comatose, awake without delirium, deceased, and discharged (from index ICU) were considered as competing risks for this multinomial regression analysis. Risk factors with scores greater than 1 (and not crossing 1) were associated with a statistically higher risk of delirium the following day. ICU=intensive care unit. OR=odds ratio. SAPS II=Simplified Acute Physiology Score II. *For all continuous variables (age, SAPS II, proportion of ABCDE elements performed), comparisons shown in parentheses correspond to the 75th vs 25th percentile values for that variable. †p values shown represent the overall p values for the variable and are not associated with the level to level comparisons within these variables, which are represented by the 95% CIs. ‡Bundle element F was assessed separately since COVID-19 presents a unique circumstance in which in-person visitation was restricted at most of the participating sites.

strategies, such as light sedation techniques, spontaneous awakening and breathing trials, avoiding benzodiazepines, early mobility, and family visitation, all occurred on fewer than 1 in every 3 days among patients with severe COVID-19.^{10,28} We found that risk of delirium among patients with severe COVID-19 was lower when benzodiazepine sedative infusions were avoided and family was present, whereas greater severity of illness and greater respiratory support was associated with a higher risk of delirium.

To our knowledge, this study is the only multisite study to assess critically ill patients with COVID-19 for delirium and coma using validated assessments and is the largest cohort of mechanically ventilated patients with COVID-19 published to date. We found that more than 80% of patients had coma and more than 50% developed delirium. These results build on the initial retrospective reports from Wuhan, China, which reported that 40 (45%) of 88 patients hospitalised with severe COVID-19 had nervous system symptoms, with 13 (15%) having impaired consciousness.⁷ Similarly, in a small cohort, Helms et al¹²

reported that 118 (84%) of 140 patients had delirium or abnormal neurological examination that highly correlated with time on ventilation. More recent cohorts of critically ill patients have reported combined durations of coma and delirium of less than a week, however, in this large COVID-19 cohort study, we found that patients had combined acute brain dysfunction for almost 2 weeks. In the MIND-USA study,¹¹ the median duration of coma was 1 day and that of delirium was 4 days, for a total of 5 days. In contrast, in our cohort, the median duration of coma was 10 days, and 3 days for delirium. We also found that more than 50% of patients had a median of 2 days of hyperactive delirium (IQR 1.0–4.0), which is higher than that reported previously.³⁵ Such prolonged periods of acute brain dysfunction have negative implications for impaired survivorship of patients with COVID-19. Patients with acute brain dysfunction are at high risk of developing ICU-associated dementia and associated post-intensive care syndrome, which affects quality of life^{8,36,37} and should be avoided by using lighter targeted sedation if possible.

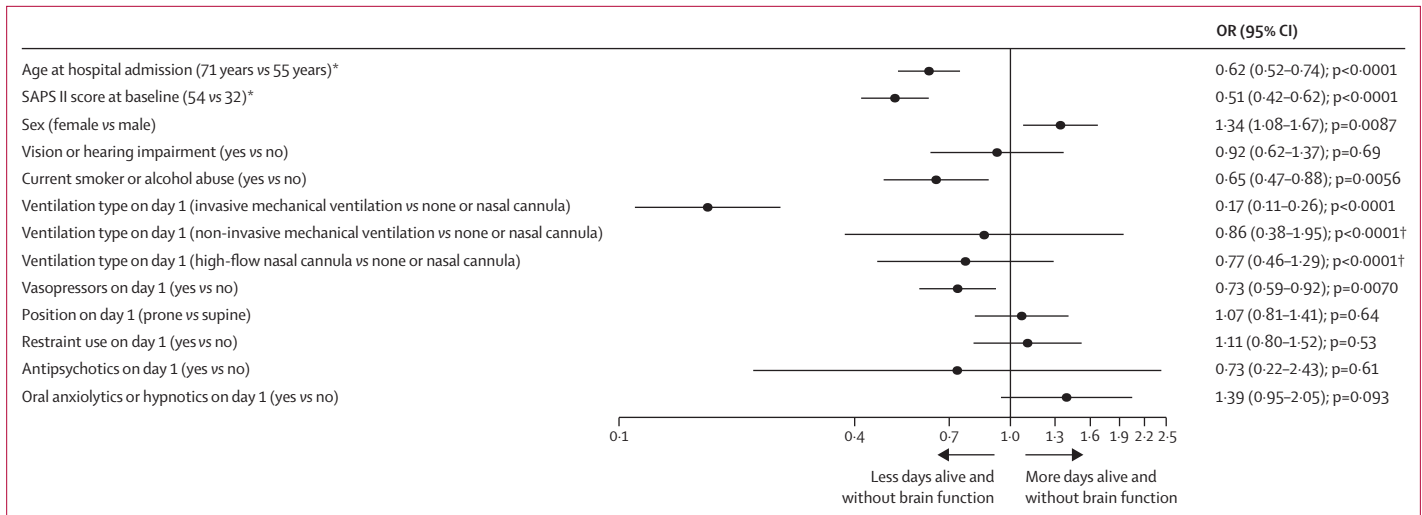


Figure 4: Forest plot of days alive and free of coma or delirium

All patients who had at least 90% delirium or coma assessments during their index intensive care unit stay were included in this analysis (n=2062). Risk factors with an OR of less than 1 indicate a negative patient outcome (fewer days alive and free of brain dysfunction, coma or delirium). OR=odds ratio. SAPS II=Simplified Acute Physiology Score II. *For all continuous variables (age, SAPS II, proportion of ABCDE elements performed), comparisons shown in parentheses correspond to the 75th vs 25th percentile values for that variable. †p values shown represent the overall p values for the variable and are not associated with the level to level comparisons within these variables, which are represented by the 95% CIs.

Although SARS-CoV-2 infection was initially hypothesised to contribute directly to neurological symptoms, it seems more likely that neurological effects are caused indirectly by factors such as low blood-oxygen levels, coagulopathy, exposure to sedative and analgesic drugs, isolation, and immobility.^{12,38,39} Heavy sedation, especially with benzodiazepines,^{10,40} is generally considered to increase risk of delirium and coma during acute illness, and often protocol-driven efforts to minimise sedation when managing acute respiratory failure have led to reductions in acute brain dysfunction.^{29,41,42} Early reports during the pandemic advocated neuromuscular blockade and deep sedation to treat patients with COVID-19 who have ARDS. Our data reflect this management strategy with a high proportion of patients given benzodiazepines (64%) and propofol (71%), both for a median of 7 days. Patient factors, such as increased ventilator-patient dyssynchrony, need for higher positive end expiratory pressures, agitation, and the decision to prone patients, might have also contributed to deeper sedation. The prolonged use of deep sedation could also be secondary to the increased number of ICU patients observed at our sites, the need to utilise non-ICU-trained staff, and inadequate resources with regards to providers, equipment, and sedatives. Our results indicate that regardless of the indication, prolonged sedation is not without consequences, and such findings provide an opportunity to improve care for future patients.

Our results support avoidance of benzodiazepine sedative infusions, which were associated with a 59% higher risk of developing delirium. When possible, health-care providers should adhere to current sedation guidelines for mechanically ventilated patients, even those with COVID-19, which recommend limiting neuromuscular blockade, avoidance of continuous infusions

of benzodiazepines, light levels of sedation, frequent awakening and breathing trials, and mobilisation; these practices improve short-term outcomes and might also reduce the risk of post-intensive care syndrome, which affects a high proportion of acute respiratory failure survivors.⁴³⁻⁴⁵ This is in line with earlier recommendations from Fan and colleagues,¹⁶ who recommended that clinicians should adhere to evidence-based practices and manage the mechanical ventilation needs and associated needs of patients with COVID-19 in a similar manner to those without the disease. As our ability to care for patients with COVID-19 improve, with better strategies to combat the virus itself and associated sequelae, and health-care systems prepare for subsequent waves of infection, it is crucial for ICU practitioners to move away from deep sedation towards the use of lighter sedation when patient-related factors and logistical issues permit its safe use, for optimum patient recovery.

Critically ill patients with COVID-19 might be uniquely affected by social isolation resulting from restricted visitation in most hospitals during the pandemic. In our cohort, we found family visitation occurred on less than 20% of eligible days, however, when visitation was allowed (virtual or in-person), the risk of delirium the following day significantly decreased (27% lower). Family presence in the ICU has been associated with decreased anxiety, reduced length of stay, and increases in patients' sense of security, satisfaction, and quality of care.^{28,46} Patients with severe COVID-19 are at high risk of these sequelae.

Our study had several limitations that warrant consideration. Because all data were collected during a short time period in May, 2020, changes in the routine care of patients with severe COVID-19 might have

occurred since study completion. However, since only a few months have passed since the study was completed, the results are likely to remain highly relevant. The retrospective study design meant that clinical assessments, which might be less sensitive than prospective research assessments, were used to detect delirium and coma. Medical teams did these assessments prospectively as part of routine care using validated instruments, and the inclusion of ICUs at 69 sites across 14 countries greatly enhanced the generalisability of study findings. Furthermore, we did not collect any neuroimaging data to further substantiate our findings. We also did not collect data on acute kidney injury, and therefore were unable to evaluate the associations of acute kidney injury and delirium in this population. Additionally, we did not collect data on sedative doses, sedation goals, or the rationale for sedation choices, but can speculate on the basis of reports¹³ that suggested use of deep sedation and neuromuscular blockade, compounded with resource constraints, led to some of the choices made. The timing of delirium assessments and daily sedation cessation were also not tracked. Although it is possible that we might have overestimated delirium prevalence slightly if done while patients were on sedative medications,⁴⁷ rapidly resolving sedative-induced delirium is rare (approximately 10%)⁴⁸ and most cases of delirium persist even with daily awakening trials. Additionally, we did not include patients with known history of brain conditions and doing so might have resulted in an underestimation of delirium prevalence. Patients were not screened for coma or delirium after discharge from the ICU and thus during the days after index ICU discharge until the day of death or the end of 21 days (whichever occurred first) patients were considered to be awake without delirium; as a result, we might have under-reported the duration of delirium. We chose a 2-week period for data collection to allow sites to enrol all patients with COVID-19 who met study eligibility criteria and to ensure that up to 28 days of data would be available by database closure date. Although we enrolled more than 2000 patients, data collection was not possible for 1036 additionally eligible patients. Exclusion of these patients could have led to some bias in our results, although the variability in enrolling patients between study countries did not vary greatly. As in any observational study, we cannot determine causality when examining factors associated with delirium and coma in patients with COVID-19. We did not record whether coma was intentionally drug induced or secondary to a patient's disease process. However, our results are consistent with the findings of numerous previous studies of delirium and coma in acute respiratory patients without COVID-19, and are key for health-care teams to formulate quality improvement decisions for COVID-19 moving forward, using evidence collected before the current pandemic¹⁶ and large multinational studies, such as ours, to identify potential modifiable risk factors.

In summary, this large, international study of patients with severe COVID-19 found that delirium and coma are common and often last for twice the duration in this patient population than that in general ICU patients. This prolonged period of acute brain dysfunction is a potential predictor of worse long-term outcomes of these survivors. The overuse of benzodiazepine sedative infusions and lack of family visitation (either in person or virtual) were associated with more delirium and thus, strategies to modify these approaches might mitigate delirium and any associated sequelae.

Contributors

BTP, RB, GHLC, OMO, WC, RR, B-GKS, SW-L, TDG, and PPP contributed to the literature search, figures, study design, data collection, data analysis, data interpretation, and writing of the manuscript. BTP, RB, GHLC, OMO, WC, RR, B-GKS, SW-L, TDG, and PPP accessed and verified the data. PLS, GL, NEB, EWE, and GL contributed to the study design, data collection, data interpretation, and critical revision of the manuscript. All the authors contributed to data collection and writing of the manuscript.

Declaration of interests

FST reports personal fees from BD, Neuroptics, Zoll, and Nihon Khoden, outside of the submitted work. NEB reports grants from the National Institutes of Health, outside of the submitted work. TDG reports grants from the National Institutes of Health, and personal fees from Haisco Pharmaceutical, outside of the submitted work. EWE reports grants from the National Institutes of Health, the Veteran's Administration, and BioXcel; non-financial support from Eli Lilly; and honoraria from Pfizer and Orion, during the conduct of the study. PPP reports grants from Pfizer, during the conduct of the study. All other authors declare no competing interests.

Data sharing

All de-identified data and the data dictionary will be shared with approval from the COVID-D steering committee and a signed data access agreement. All requests should be sent to brenda.pun@vumc.org. The statistical analysis plan and protocol are publicly available online.

Acknowledgments

We used REDCap, a secure online database, supported in part by the National Institutes of Health (TR000445). BTP is supported in part by National Heart Lung and Blood Institute (R01HL14678-01). NEB is supported by the National Institute on Aging of the National Institutes of Health (K76AG054864). TDG received support from the National Institutes of Health (HL135144). EWE is currently receiving grant funding from National Institute on Aging (1R01AG058639-02A1 and 3R01AG058639-02S1) and the Veteran's Administration. PPP is supported by the National Institute of Health (AG061161, AG058639, AG054259 and GM120484). The authors would like to thank all study centres and staff who participated, and also acknowledge the efforts of the nurses, trainees, ancillary staff, and physicians at participating sites who have worked selflessly to care for patients during the COVID-19 pandemic.

References

- Zhu N, Zhang D, Wang W, et al. A novel coronavirus from patients with pneumonia in China, 2019. *N Engl J Med* 2020; **382**: 727–33.
- WHO. Coronavirus disease (COVID-2019). Situation report—126. May 25, 2020. <https://www.who.int/emergencies/diseases/novel-coronavirus-2019/situation-reports> (accessed May 25, 2020).
- Yang X, Yu Y, Xu J, et al. Clinical course and outcomes of critically ill patients with SARS-CoV-2 pneumonia in Wuhan, China: a single-centered, retrospective, observational study. *Lancet Respir Med* 2020; **8**: 475–81.
- Huang C, Wang Y, Li X, et al. Clinical features of patients infected with 2019 novel coronavirus in Wuhan, China. *Lancet* 2020; **395**: 497–506.
- Li YC, Bai WZ, Hashikawa T. The neuroinvasive potential of SARS-CoV2 may play a role in the respiratory failure of COVID-19 patients. *J Med Virol* 2020; **92**: 552–55.

For the statistical analysis plan and protocol see <https://osf.io/hf5bp/>

- 6 Baig AM, Khaleeq A, Ali U, Syeda H. Evidence of the COVID-19 virus targeting the CNS: tissue distribution, host-virus interaction, and proposed neurotropic mechanisms. *ACS Chem Neurosci* 2020; **11**: 995–98.
- 7 Mao L, Wang M, Chen S, et al. Neurological manifestations of hospitalized patients with COVID-19 in Wuhan, China: a retrospective case series study. *medRxiv* 2020; published online Feb 25. <https://doi.org/10.1101/2020.02.22.20026500> (preprint).
- 8 Pandharipande PP, Girard TD, Jackson JC, et al. Long-term cognitive impairment after critical illness. *N Engl J Med* 2013; **369**: 1306–16.
- 9 Ely EW, Shintani A, Truman B, et al. Delirium as a predictor of mortality in mechanically ventilated patients in the intensive care unit. *JAMA* 2004; **291**: 1753–62.
- 10 Devlin JW, Skrobik Y, Gélinas C, et al. Clinical practice guidelines for the prevention and management of pain, agitation/sedation, delirium, immobility, and sleep disruption in adult patients in the ICU. *Crit Care Med* 2018; **46**: e825–73.
- 11 Girard TD, Exline MC, Carson SS, et al. Haloperidol and ziprasidone for treatment of delirium in critical illness. *N Engl J Med* 2018; **379**: 2506–16.
- 12 Helms J, Kremer S, Merdji H, et al. Delirium and encephalopathy in severe COVID-19: a cohort analysis of ICU patients. *Crit Care* 2020; **24**: 491.
- 13 Kapp CM, Zaeh S, Niedermeyer S, Punjabi NM, Siddharthan T, Damarla M. The use of analgesia and sedation in mechanically ventilated patients with COVID-19 ARDS. *Anesth Analg* 2020; **131**: e198–200.
- 14 Marini JJ, Gattinoni L. Management of COVID-19 respiratory distress. *JAMA* 2020; **323**: 2329–30.
- 15 Hanidziar D, Bittner EA. Sedation of mechanically ventilated COVID-19 patients: challenges and special considerations. *Anesth Analg* 2020; **131**: e40–41.
- 16 Fan E, Beitler JR, Brochard L, et al. COVID-19-associated acute respiratory distress syndrome: is a different approach to management warranted? *Lancet Respir Med* 2020; **8**: 816–21.
- 17 Cummings MJ, Baldwin MR, Abrams D, et al. Epidemiology, clinical course, and outcomes of critically ill adults with COVID-19 in New York City: a prospective cohort study. *Lancet* 2020; **395**: 1763–70.
- 18 Garcez FB, Aliberti MJR, Poco PCE, et al. Delirium and adverse outcomes in hospitalized patients with COVID-19. *J Am Geriatr Soc* 2020; **68**: 2440–46.
- 19 Ticinesi A, Cerundolo N, Parise A, et al. Delirium in COVID-19: epidemiology and clinical correlations in a large group of patients admitted to an academic hospital. *Aging Clin Exp Res* 2020; **32**: 2159–66.
- 20 Kotfis K, Williams Roberson S, Wilson JE, Dabrowski W, Pun BT, Ely EW. COVID-19: ICU delirium management during SARS-CoV-2 pandemic. *Crit Care* 2020; **24**: 176.
- 21 Ellul MA, Benjamin L, Singh B, et al. Neurological associations of COVID-19. *Lancet Neurol* 2020; **19**: 767–83.
- 22 Harris PA, Taylor R, Thielke R, Payne J, Gonzalez N, Conde JG. Research electronic data capture (REDCap)—a metadata-driven methodology and workflow process for providing translational research informatics support. *J Biomed Inform* 2009; **42**: 377–81.
- 23 Ely EW, Truman B, Shintani A, et al. Monitoring sedation status over time in ICU patients: reliability and validity of the Richmond Agitation-Sedation Scale (RASS). *JAMA* 2003; **289**: 2983–91.
- 24 Riker RR, Picard JT, Fraser GL. Prospective evaluation of the Sedation-Agitation Scale for adult critically ill patients. *Crit Care Med* 1999; **27**: 1325–29.
- 25 Teasdale G, Jennett B. Assessment of coma and impaired consciousness. A practical scale. *Lancet* 1974; **2**: 81–84.
- 26 Ely EW, Inouye SK, Bernard GR, et al. Delirium in mechanically ventilated patients: validity and reliability of the confusion assessment method for the intensive care unit (CAM-ICU). *JAMA* 2001; **286**: 2703–10.
- 27 Bergeron N, Dubois MJ, Dumont M, Dial S, Skrobik Y. Intensive Care Delirium Screening Checklist: evaluation of a new screening tool. *Intensive Care Med* 2001; **27**: 859–64.
- 28 Davidson JE, Powers K, Hedayat KM, et al. Clinical practice guidelines for support of the family in the patient-centered intensive care unit: American College of Critical Care Medicine Task Force 2004–2005. *Crit Care Med* 2007; **35**: 605–22.
- 29 Pun BT, Balas MC, Barnes-Daly MA, et al. Caring for critically ill patients with the ABCDEF bundle: results of the ICU Liberation Collaborative in over 15,000 adults. *Crit Care Med* 2019; **47**: 3–14.
- 30 von Elm E, Altman DG, Egger M, Pocock SJ, Gøtzsche PC, Vandenbroucke JP. The Strengthening of Reporting of Observational Studies in Epidemiology (STROBE) statement: guidelines for reporting observational studies. *Int J Surg* 2014; **12**: 1495–99.
- 31 Barnes-Daly MA, Phillips G, Ely EW. Improving hospital survival and reducing brain dysfunction at seven California community hospitals: implementing PAD guidelines via the ABCDEF bundle in 6,064 patients. *Crit Care Med* 2017; **45**: 171–78.
- 32 Liu Q, Shepherd BE, Li C, Harrell FE Jr. Modeling continuous response variables using ordinal regression. *Stat Med* 2017; **36**: 4316–35.
- 33 White H. A heteroskedasticity-consistent covariance matrix estimator and a direct test for heteroskedasticity. *Econometrica* 1980; **48**: 817–38.
- 34 Vanderbilt Biostatistics. Regression modeling strategies. With applications to linear models, survival analysis and logistic regression. <http://biostat.mc.vanderbilt.edu/wiki/bin/view/Main/RmS> (accessed Dec 3, 2020).
- 35 Peterson JF, Pun BT, Dittus RS, et al. Delirium and its motoric subtypes: a study of 614 critically ill patients. *J Am Geriatr Soc* 2006; **54**: 479–84.
- 36 Norman BC, Jackson JC, Graves JA, et al. Employment outcomes after critical illness: an analysis of the bringing to light the risk factors and incidence of neuropsychological dysfunction in ICU survivors cohort. *Crit Care Med* 2016; **44**: 2003–09.
- 37 Jackson JC, Pandharipande PP, Girard TD, et al. Depression, post-traumatic stress disorder, and functional disability in survivors of critical illness in the BRAIN-ICU study: a longitudinal cohort study. *Lancet Respir Med* 2014; **2**: 369–79.
- 38 Solomon IH, Normandin E, Bhattacharyya S, et al. Neuropathological features of Covid-19. *N Engl J Med* 2020; **383**: 989–92.
- 39 Kanberg N, Ashton NJ, Andersson LM, et al. Neurochemical evidence of astrocytic and neuronal injury commonly found in COVID-19. *Neurology* 2020; **95**: e1754–59.
- 40 Pandharipande P, Shintani A, Peterson J, et al. Lorazepam is an independent risk factor for transitioning to delirium in intensive care unit patients. *Anesthesiology* 2006; **104**: 21–26.
- 41 Barnes-Daly MA, Pun BT, Harmon LA, et al. Improving health care for critically ill patients using an evidence-based collaborative approach to ABCDEF bundle dissemination and implementation. *Worldviews Evid Based Nurs* 2018; **15**: 206–16.
- 42 Girard TD, Kress JP, Fuchs BD, et al. Efficacy and safety of a paired sedation and ventilator weaning protocol for mechanically ventilated patients in intensive care (Awakening and Breathing Controlled trial): a randomised controlled trial. *Lancet* 2008; **371**: 126–34.
- 43 Needham DM, Davidson J, Cohen H, et al. Improving long-term outcomes after discharge from intensive care unit: report from a stakeholders' conference. *Crit Care Med* 2012; **40**: 502–09.
- 44 Elliott D, Davidson JE, Harvey MA, et al. Exploring the scope of post-intensive care syndrome therapy and care: engagement of non-critical care providers and survivors in a second stakeholders meeting. *Crit Care Med* 2014; **42**: 2518–26.
- 45 Marra A, Pandharipande PP, Girard TD, et al. Co-occurrence of post-intensive care syndrome problems among 406 survivors of critical illness. *Crit Care Med* 2018; **46**: 1393–401.
- 46 Kleinpell R, Heyland DK, Lipman J, et al. Patient and family engagement in the ICU: report from the task force of the World Federation of Societies of Intensive and Critical Care Medicine. *J Crit Care* 2018; **48**: 251–56.
- 47 Haenggi M, Blum S, Brechbuehl R, Brunello A, Jakob SM, Takala J. Effect of sedation level on the prevalence of delirium when assessed with CAM-ICU and ICDS-C. *Intensive Care Med* 2013; **39**: 2171–79.
- 48 Patel SB, Poston JT, Pohlman A, Hall JB, Kress JP. Rapidly reversible, sedation-related delirium versus persistent delirium in the intensive care unit. *Am J Respir Crit Care Med* 2014; **189**: 658–65.